

Proprietary data, company confidential.
All rights reserved

Als Betriebsgeheimnis anvertraut
Alle Rechte vorbehalten

1		2		3		4		5	
HIERARCHY						SHEET		PDF-SHEET	
A5B00900172405-22140						index		sheet 1	
						netlist1		sheet 2	
						netlist2		sheet 3	
						poslist1		sheet 4	
						page1		----	
						sheet1		sheet 5	
						sheet4		sheet 6	
						sheet10		sheet 7	
						sheet11		sheet 8	
						sheet12		sheet 9	
						sheet13		sheet 10	
						sheet14		sheet 11	
						sheet15		sheet 12	
						sheet16		sheet 13	
						sheet17		sheet 14	
						sheet19		sheet 15	
						sheet21		sheet 16	
						sheet22		sheet 17	
						sheet26		sheet 18	
						sheet27		sheet 19	
						sheet35		sheet 20	
						sheet38		sheet 21	
						sheet39		sheet 22	
sheet42		sheet 23							

A	1.5V_DSP /sheet13 9 B /sheet11 11 C	/sheet35 2 A A(0:24) /sheet10 12 G /sheet12 15 E /sheet12 13 D /sheet12 10 D	/sheet15 4 E /sheet15 2 E /sheet13 2 B /sheet13 10 D	/sheet4 10 F /sheet10 3 F	/sheet10 13 F /sheet35 1 D	/sheet35 9 B	/sheet42 9 C	KP_IN1 /sheet27 2 B /sheet27 10 C /sheet13 7 C /sheet10 5 G	/sheet15 10 B /sheet13 1 E	PIXEL_DATA1 /sheet17 6 B /sheet35 3 C	/sheet13 2 C /sheet13 3 E	/sheet4 2 C /sheet39 1 C /sheet10 6 B	/sheet13 12 G /sheet13 2 D	TX_PCN_OUT /sheet39 1 C /sheet39 6 F
	1.5V_UC /sheet13 9 B /sheet11 11 D /sheet11 5 B /sheet35 2 B	/sheet10 12 G /sheet12 13 D /sheet12 10 D AAC_CLK32 /sheet10 13 D /sheet1 7 D	BC0 /sheet10 7 G /sheet12 15 E /sheet12 10 C	CAMERA_CLK /sheet17 2 C /sheet35 4 D	CKE /sheet10 7 G /sheet12 15 E /sheet12 10 C	DISPLAY_D0 /sheet22 11 E /sheet35 4 D	HF_OUT1 /sheet38 5 D /sheet39 1 D		MMC_CD /sheet35 11 F /sheet35 2 G	PIXEL_DATA2 /sheet17 6 C /sheet35 3 C	PM_SIN26M /sheet13 3 E /sheet4 2 F /sheet4 4 F /sheet39 15 C	RF_I /sheet4 2 B /sheet4 4 B /sheet39 15 D /sheet10 8 B	SGL_SIN26M /sheet4 2 C /sheet4 4 C /sheet39 15 C /sheet10 1 E	USB_D+ /sheet15 7 G /sheet10 13 C
	1.8V_AAC /sheet1 4 C /sheet1 15 D /sheet1 13 E	AAC_CS /sheet10 13 E /sheet1 7 D /sheet1 10 D	BC1 /sheet10 7 G /sheet12 15 F /sheet12 10 C	CAMERA_HSYNC /sheet17 6 C /sheet35 3 D	CLK32 /sheet42 1 D /sheet4 10 F /sheet10 5 B /sheet35 8 G	DISPLAY_D1 /sheet22 11 E /sheet35 4 D	HW_DET_BAND_SEL /sheet10 3 D /sheet10 2 G	KP_IN2 /sheet27 2 B /sheet27 10 D /sheet10 5 G	MMC_CLK /sheet35 2 G /sheet35 11 E	PIXEL_DATA3 /sheet17 6 C /sheet35 3 C	PM_SSC_MRST /sheet13 6 F	RF_IX /sheet4 2 B /sheet4 4 B /sheet39 15 D /sheet10 8 B	SIM_CLK /sheet16 9 B /sheet10 11 B	USB_D- /sheet15 7 G /sheet10 13 C
	1.8V_MEM1 /sheet13 9 B /sheet11 11 D /sheet12 10 E /sheet1 3 C	AAC_INT /sheet10 13 D /sheet1 10 D	BFCLKI /sheet10 6 G /sheet12 15 E /sheet12 9 B	CAMERA_I2C_CLK /sheet17 2 C /sheet35 9 G	CS0_FLASH /sheet10 7 G /sheet12 15 F /sheet12 10 B	DISPLAY_D2 /sheet22 11 E /sheet35 4 D	HW_DET_MOB_TYPE1 /sheet10 3 D /sheet10 2 G	KP_IN3 /sheet27 2 B /sheet27 9 D /sheet14 6 D /sheet4 2 G /sheet4 4 G /sheet10 5 G	MMC_CMD /sheet35 2 G /sheet35 11 E	PIXEL_DATA4 /sheet17 6 C /sheet35 3 C	PM_WADOG /sheet13 2 D /sheet10 5 B	RF_Q /sheet4 2 B /sheet4 4 B /sheet39 15 D /sheet10 8 B	SIM_RST /sheet16 9 B /sheet10 11 B	USB_SWITCH_EN /sheet15 1 F /sheet10 6 B
	1.8V_MEM2 /sheet42 4 A /sheet42 5 B /sheet13 9 B /sheet13 9 C /sheet4 14 F /sheet12 6 C /sheet12 9 D /sheet12 9 D /sheet12 12 A /sheet12 10 B /sheet1 3 D /sheet35 2 A	AAC_RESET /sheet10 6 B /sheet1 7 D AC_CTS /sheet15 7 G /sheet10 13 E AC_DCD /sheet15 7 G /sheet10 5 B AC_RTS /sheet15 7 G /sheet10 13 E	BFCLKO /sheet10 6 G /sheet12 8 B /sheet12 15 E BOOST_OUT /sheet13 10 E /sheet13 6 C BREF /sheet10 10 B /sheet10 14 B BT_CTS /sheet42 3 C /sheet4 10 E /sheet10 13 E	CAMERA_VSYNC /sheet17 6 C /sheet35 3 C CAM_SENSOR_PD /sheet17 2 D /sheet35 7 G CAS /sheet10 6 G /sheet12 15 E /sheet12 10 C	CS1_SDRAM /sheet10 7 G /sheet12 15 F /sheet12 10 C CS2_FLASH /sheet10 7 G /sheet12 15 F /sheet12 10 B CTS /sheet15 3 G /sheet15 10 B	DISPLAY_D3 /sheet22 11 E /sheet35 4 D DISPLAY_D4 /sheet22 11 E /sheet35 4 D DISPLAY_D5 /sheet22 11 E /sheet35 4 D DISPLAY_D6 /sheet22 11 E /sheet35 4 D DISPLAY_D7 /sheet22 11 F /sheet35 4 E	HW_DET_MOB_TYPE2 /sheet10 3 D /sheet10 2 G HW_DET_MOB_TYPE3 /sheet10 3 D /sheet10 2 G HW_DET_MOB_TYPE4 /sheet10 3 D /sheet10 2 G HW_DET_MOB_TYPE5 /sheet10 3 D /sheet10 2 G HW_DET_RF_TYPE /sheet10 3 D /sheet10 2 G	KP_OUT0 /sheet27 2 B /sheet10 3 F Kp_OUT1 /sheet27 2 B /sheet10 3 F Kp_OUT2 /sheet27 2 B /sheet10 3 F Kp_OUT3 /sheet27 10 C /sheet10 3 E	MON1 /sheet10 3 D MON2 /sheet10 2 D MONO1_LP_OUT /sheet13 3 E /sheet13 6 E MONO1_OUT /sheet13 7 E /sheet4 2 G /sheet4 4 G /sheet17 10 A MONO2_LP_OUT /sheet13 3 E /sheet13 6 E MONO2_OUT /sheet13 7 E /sheet4 4 G /sheet4 12 B /sheet17 10 B OSC32K /sheet10 2 E PCN_PA_IN /sheet39 1 F /sheet39 9 E PHANTOM_BUF_OUT /sheet15 11 B /sheet13 6 E PIOVDD /sheet35 8 A /sheet35 2 A /sheet35 3 A /sheet35 4 A /sheet35 9 D	PM_CHARGE_UC /sheet13 2 D /sheet10 5 B PM_I2S_ADC /sheet13 7 F /sheet10 13 C PM_I2S_CLK /sheet13 8 F /sheet13 3 F /sheet4 2 B /sheet1 11 D PM_I2S_DAC /sheet13 3 F /sheet1 4 D /sheet1 11 D PM_I2S_WA0 /sheet13 8 F /sheet13 3 F /sheet1 4 D /sheet1 11 D PM_INT /sheet13 7 F /sheet10 13 D PM_RESET_1.8V /sheet13 7 C /sheet12 7 E /sheet12 10 B PM_RESET_N /sheet13 7 C /sheet13 3 E PM_RF2_EN /sheet13 2 C /sheet10 6 B PM_RINGIN /sheet13 3 E /sheet10 11 B PM_RTC_INT /sheet4 4 C	RD /sheet10 7 G /sheet12 15 E /sheet12 10 B REF_GND /sheet13 6 G /sheet13 2 A RF_AFC /sheet4 4 B /sheet4 2 B /sheet39 15 B /sheet10 1 E RF_ANT_DET /sheet38 7 D /sheet4 2 D /sheet4 4 D /sheet10 6 A RF_TXONPA /sheet4 2 C /sheet4 4 C /sheet39 1 F /sheet10 5 B RTS /sheet15 10 B /sheet15 3 G RX /sheet15 2 G /sheet15 10 A SDCLKI /sheet10 6 G /sheet12 15 E /sheet12 8 C SDCLKO /sheet10 6 G /sheet12 15 E /sheet12 8 C TX /sheet15 2 F /sheet15 2 G /sheet15 11 A TX_GSM_OUT /sheet13 12 G /sheet13 2 D /sheet39 1 C /sheet39 6 F	RF_RAMP1 /sheet4 2 C /sheet4 4 C /sheet39 1 F /sheet10 7 A RF_RX_SW /sheet4 4 E /sheet4 2 E /sheet39 1 B /sheet10 6 B STEREO1_OUT /sheet15 11 B /sheet13 6 E STEREO2_OUT /sheet15 11 B /sheet13 6 E TRACEPKT4 /sheet10 3 D TRACEPKT5 /sheet10 3 E TRACEPKT6 /sheet10 3 E TRACEPKT7 /sheet10 3 E TRIG_IN /sheet10 2 D TVCO /sheet4 2 C /sheet4 4 C /sheet39 15 B /sheet10 9 B /sheet10 12 A	STEPDOWN_GND /sheet13 11 A /sheet13 6 F /sheet13 11 A /sheet13 7 H /sheet13 3 B STEPUP_GND /sheet13 11 E /sheet13 9 H /sheet13 10 D /sheet13 11 E /sheet13 12 D /sheet13 10 D STEREO1_OUT /sheet15 11 B /sheet13 6 E STEREO2_OUT /sheet15 11 B /sheet13 6 E TRACEPKT4 /sheet10 3 D TRACEPKT5 /sheet10 3 E TRACEPKT6 /sheet10 3 E TRACEPKT7 /sheet10 3 E TX /sheet15 2 F /sheet15 2 G /sheet15 11 A TX_GSM_OUT /sheet13 12 G /sheet13 2 D /sheet39 1 C /sheet39 6 F	VBOOST /sheet27 1 C /sheet13 12 D /sheet4 9 B /sheet4 12 B /sheet22 11 E VBUCK /sheet13 12 A /sheet13 2 B VBUCK_FB /sheet13 10 A /sheet13 2 C VCC_LIGHT /sheet27 2 C VCXOEN_UC /sheet13 2 C /sheet10 1 E VDD_AFC /sheet13 9 C /sheet11 8 B VDD_BRIGHT /sheet39 9 A /sheet39 9 E /sheet39 8 E /sheet39 11 C /sheet39 8 B /sheet39 9 B /sheet39 11 A /sheet39 7 A /sheet39 9 A /sheet39 7 C
	2.65V /sheet42 5 B /sheet42 5 B /sheet42 5 A /sheet42 5 A /sheet26 2 A /sheet15 5 F /sheet15 6 F /sheet14 5 A /sheet13 4 F /sheet13 3 D /sheet13 9 B /sheet11 7 B /sheet11 8 B /sheet11 11 C /sheet11 5 B /sheet11 8 B /sheet4 14 F /sheet4 2 F /sheet4 4 F /sheet10 15 D /sheet10 2 F /sheet10 2 D /sheet10 10 A /page1 2 B	AC_RX /sheet15 7 G /sheet10 13 E AC_TX /sheet15 7 G /sheet10 13 E ADV /sheet10 6 G /sheet12 15 E /sheet12 10 B AKKU_TYP /sheet14 5 A /sheet4 2 F /sheet4 4 F /sheet10 9 B BATT+ /sheet27 1 C /sheet26 6 B /sheet21 5 C /sheet14 7 C /sheet13 3 A /sheet13 3 C /sheet13 4 B /sheet13 3 E /sheet13 12 G /sheet13 2 B /sheet13 3 C /sheet4 9 A /sheet1 3 C /sheet22 11 E /sheet22 11 E	BT_PCM_CLK /sheet42 3 C /sheet4 10 F /sheet10 15 D BT_PCM_IN /sheet42 3 C /sheet4 10 F /sheet10 13 D BT_PCM_OUT /sheet42 3 C /sheet4 10 F /sheet10 13 D BT_PCM_SYNC /sheet42 3 C /sheet4 10 F /sheet10 13 D BT_RESET /sheet42 3 D /sheet13 7 D /sheet4 10 F	CHARGE_CNTRL /sheet13 10 H /sheet13 7 D CHARGE_SOURCE /sheet13 10 H /sheet13 7 D CIF_CLK /sheet10 3 C /sheet1 7 D /sheet35 8 D CIF_CS /sheet10 6 B /sheet35 8 B CIF_CS_DISPLAY /sheet10 7 B /sheet35 8 B CIF_CS_EBU /sheet10 7 G /sheet12 15 F CIF_INT /sheet10 3 F /sheet35 8 A CIF_MRST /sheet10 5 B /sheet1 7 D /sheet1 4 E CIF_MTSR /sheet10 3 C /sheet1 7 D /sheet35 8 D CIF_RESET /sheet10 3 C /sheet1 7 D /sheet35 8 A CIF_RS /sheet10 3 C /sheet35 8 B CIF_VSYNC /sheet15 7 F	D(0:15) /sheet10 9 G /sheet12 15 B /sheet12 13 E D(3) /page1 3 C DB_ETMCLK /sheet10 3 D DB_ETMSYNC /sheet10 3 D DB_RTCK /sheet10 3 D DB_TCK /sheet10 3 C /page1 3 C DB_TDI /sheet10 3 C /page1 3 B DB_TDO /sheet10 3 C DB_TMS /sheet10 3 C /page1 3 B DB_TRST /sheet10 3 D /page1 3 C DCD /sheet15 3 G /sheet15 10 B DISPLAY_CD /sheet4 12 A /sheet4 9 A /sheet12 11 D /sheet13 1 F GSM_PA_IN /sheet39 1 F /sheet39 9 E HF_OUT	DISPLAY_D8 /sheet22 11 F /sheet35 4 E DISPLAY_D9 /sheet22 11 E /sheet35 4 D DISPLAY_D10 /sheet22 11 F /sheet35 4 E DISPLAY_D11 /sheet22 11 F /sheet35 4 E DISPLAY_D12 /sheet22 11 F /sheet35 4 E DISPLAY_D13 /sheet22 11 F /sheet35 4 E DISPLAY_D14 /sheet22 11 F /sheet35 4 E DISPLAY_D15 /sheet22 11 F /sheet35 4 E DISPLAY_D16 /sheet22 11 F /sheet35 4 E DISPLAY_D17 /sheet22 11 F /sheet35 4 E DISPLAY_D18 /sheet22 11 F /sheet35 4 E DISPLAY_D19 /sheet22 11 F /sheet35 4 E DISPLAY_D20 /sheet22 11 F /sheet35 4 E DISPLAY_D21 /sheet22 11 F /sheet35 4 E DISPLAY_D22 /sheet22 11 F /sheet35 4 E DISPLAY_D23 /sheet22 11 F /sheet35 4 E DISPLAY_D24 /sheet22 11 F /sheet35 4 E DISPLAY_D25 /sheet22 11 F /sheet35 4 E DISPLAY_D26 /sheet22 11 F /sheet35 4 E DISPLAY_D27 /sheet22 11 F /sheet35 4 E DISPLAY_D28 /sheet22 11 F /sheet35 4 E DISPLAY_D29 /sheet22 11 F /sheet35 4 E DISPLAY_D30 /sheet22 11 F /sheet35 4 E DISPLAY_D31 /sheet22 11 F /sheet35 4 E DISPLAY_D32 /sheet22 11 F /sheet35 4 E DISPLAY_D33 /sheet22 11 F /sheet35 4 E DISPLAY_D34 /sheet22 11 F /sheet35 4 E DISPLAY_D35 /sheet22 11 F /sheet35 4 E DISPLAY_D36 /sheet22 11 F /sheet35 4 E DISPLAY_D37 /sheet22 11 F /sheet35 4 E DISPLAY_D38 /sheet22 11 F /sheet35 4 E DISPLAY_D39 /sheet22 11 F /sheet35 4 E DISPLAY_D40 /sheet22 11 F /sheet35 4 E DISPLAY_D41 /sheet22 11 F /sheet35 4 E DISPLAY_D42 /sheet22 11 F /sheet35 4 E DISPLAY_D43 /sheet22 11 F /sheet35 4 E DISPLAY_D44 /sheet22 11 F /sheet35 4 E DISPLAY_D45 /sheet22 11 F /sheet35 4 E DISPLAY_D46 /sheet22 11 F /sheet35 4 E DISPLAY_D47 /sheet22 11 F /sheet35 4 E DISPLAY_D48 /sheet22 11 F /sheet35 4 E DISPLAY_D49 /sheet22 11 F /sheet35 4 E DISPLAY_D50 /sheet22 11 F /sheet35 4 E DISPLAY_D51 /sheet22 11 F /sheet35 4 E DISPLAY_D52 /sheet22 11 F /sheet35 4 E DISPLAY_D53 /sheet22 11 F /sheet35 4 E DISPLAY_D54 /sheet22 11 F /sheet35 4 E DISPLAY_D55 /sheet22 11 F /sheet35 4 E DISPLAY_D56 /sheet22 11 F /sheet35 4 E DISPLAY_D57 /sheet22 11 F /sheet35 4 E DISPLAY_D58 /sheet22 11 F /sheet35 4 E DISPLAY_D59 /sheet22 11 F /sheet35 4 E DISPLAY_D60 /sheet22 11 F /sheet35 4 E DISPLAY_D61 /sheet22 11 F /sheet35 4 E DISPLAY_D62 /sheet22 11 F /sheet35 4 E DISPLAY_D63 /sheet22 11 F /sheet35 4 E DISPLAY_D64 /sheet22 11 F /sheet35 4 E DISPLAY_D65 /sheet22 11 F /sheet35 4 E DISPLAY_D66 /sheet22 11 F /sheet35 4 E DISPLAY_D67 /sheet22 11 F /sheet35 4 E DISPLAY_D68 /sheet22 11 F /sheet35 4 E DISPLAY_D69 /sheet22 11 F /sheet35 4 E DISPLAY_D70 /sheet22 11 F /sheet35 4 E DISPLAY_D71 /sheet22 11 F /sheet35 4 E DISPLAY_D72 /sheet22 11 F /sheet35 4 E DISPLAY_D73 /sheet22 11 F /sheet35 4 E DISPLAY_D74 /sheet22 11 F /sheet35 4 E DISPLAY_D75 /sheet22 11 F /sheet35 4 E DISPLAY_D76 /sheet22 11 F /sheet35 4 E DISPLAY_D77 /sheet22 11 F /sheet35 4 E DISPLAY_D78 /sheet22 11 F /sheet35 4 E DISPLAY_D79 /sheet22 11 F /sheet35 4 E DISPLAY_D80 /sheet22 11 F /sheet35 4 E DISPLAY_D								

Als Betriebsgeheimnis anvertraut
Alle Rechte vorbehalten

1

2

3

4

5

VDD_BRIGHT_ANT
/sheet38 7 C
/sheet39 6 A

VDD_BT
/sheet42 4 B
/sheet42 3 A
/sheet13 9 C
/sheet4 14 F

VDD_BT_RF
/sheet42 7 B
/sheet42 6 A
/sheet42 3 A
/sheet42 5 B

VDD_CHARGE
/sheet13 2 D
/sheet13 10 H

VDD_RF1
/sheet13 9 C
/sheet4 4 D
/sheet4 2 D
/sheet39 8 F

VDD_RF2
/sheet13 9 C

VDD_RTC
/sheet13 2 C
/sheet13 9 B
/sheet11 5 B

VDD_SIM
/sheet16 9 C
/sheet13 9 B

VDD_USB
/sheet15 5 F
/sheet13 9 B
/sheet11 5 B

VDD_VIBRA
/sheet21 5 C
/sheet13 9 B

VREFEXS_GND
/sheet13 2 E
/sheet13 4 F
/sheet13 7 H

WAIT
/sheet10 6 G
/sheet12 15 E
/sheet12 10 A

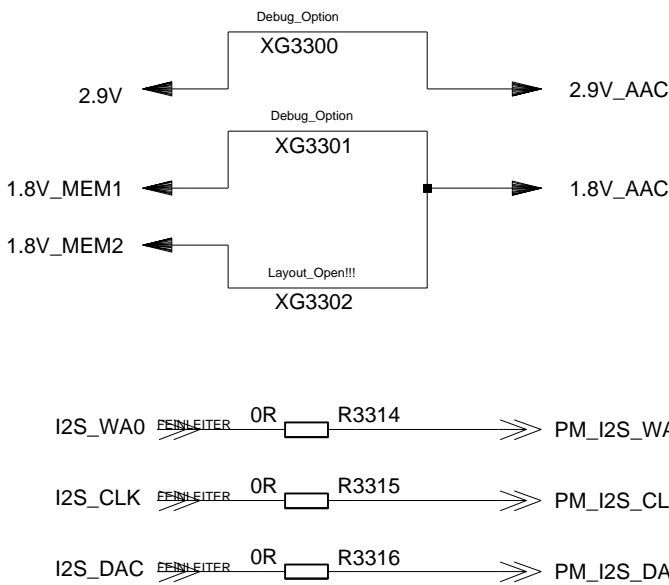
WR
/sheet10 7 G
/sheet12 15 E
/sheet12 10 B

				DATE	05.07.2004	Sirius B1+ Board Variant V2 TOP HIERARCHY LEVEL SCHEMATIC	1:1
				USER	Kuehn		
				APPR'D			
				COM MD PD HW4 ULM		131380	netlist2
2	25049	08.03.2005	Kue	Siemens AG			
1	22142	12.01.2005	Me				
VERS.	CHANGE NUMBER	DATE	NAME	(Created by BOM number: A5B00900172408-25049)			

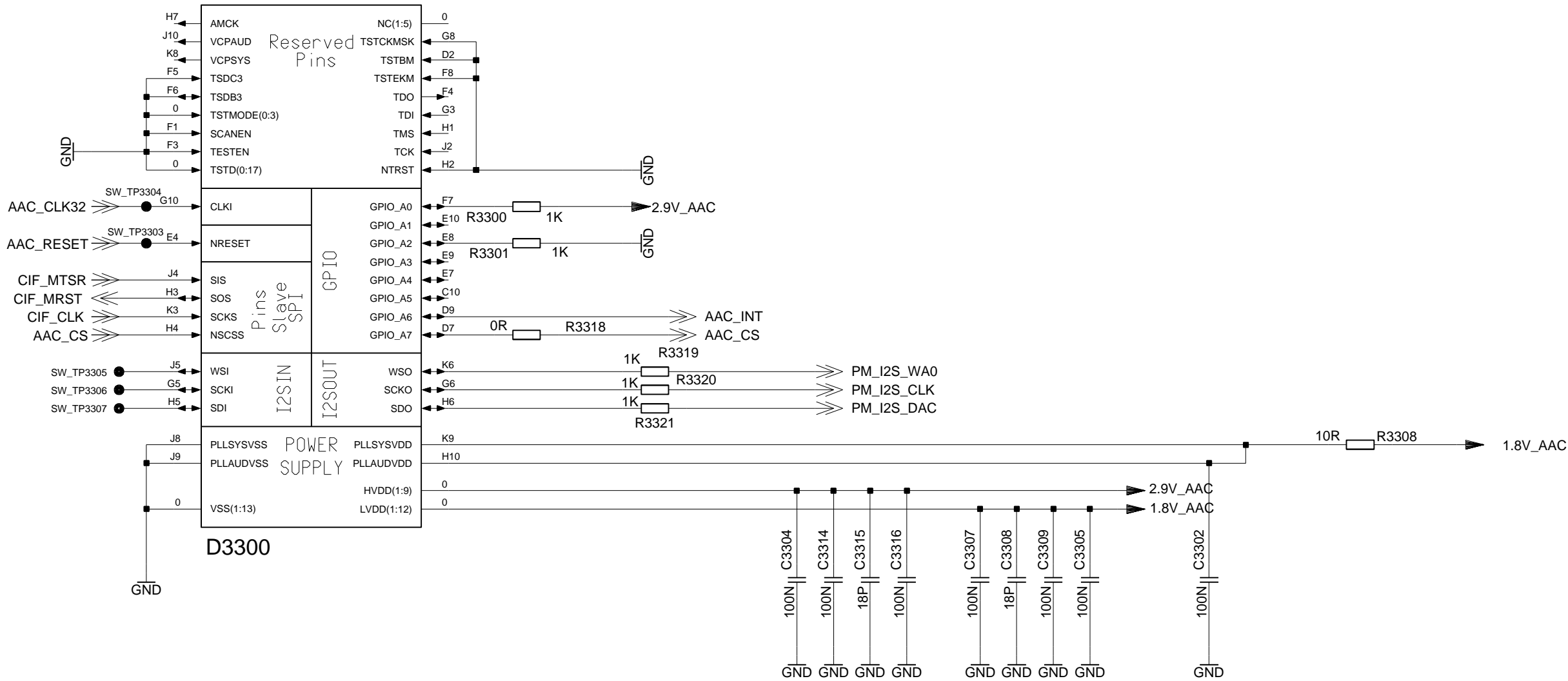
1		2		3		4		5		6		7		8		9		10	
A	C1000 /sheet10 3 E	C1335 /sheet13 6 E	C2226 /sheet22 10 F	C3906 /sheet39 6 C	L1302 /sheet13 10 D	R1502 /sheet15 6 C	R3587 /sheet35 13 E	V1304 /sheet13 11 E											
	C1001 /sheet10 2 E	C1336 /sheet13 10 D	C2227 /sheet22 10 F	C3907 /sheet39 6 C	L1503 /sheet15 10 B	R1505 /sheet15 5 C	R3588 /sheet35 13 E	V1305-2 /sheet13 11 G											
	C1002 /sheet10 2 E	C1337 /sheet13 7 A	C2301 /sheet27 5 C	C3911 /sheet39 2 B	L1504 /sheet15 10 B	R1507 /sheet15 6 F	R3589 /sheet35 13 F	V1305-1 /sheet13 11 G											
	C1003 /sheet10 2 E	C1338 /sheet13 8 A	C2302 /sheet27 7 B	C3918 /sheet39 3 D	L1505 /sheet15 10 B	R1508 /sheet15 8 B	R3801 /sheet38 6 C	V1318 /sheet13 7 A											
	C1005 /sheet10 6 A	C1339 /sheet13 7 C	C2320 /sheet27 8 B	C3919 /sheet39 2 D	L2633 /sheet26 6 B	R1509 /sheet15 5 E	R3802 /sheet38 7 C	V1400 /sheet14 5 B											
	C1006 /sheet10 14 D	C1340 /sheet13 7 C	C2630 /sheet26 6 B	C3920 /sheet39 11 A	L3801 /sheet38 6 C	R1510 /sheet15 5 E	R3804 /sheet38 5 B	V1500 /sheet15 6 F											
	C1008 /sheet10 14 E	C1341 /sheet13 7 C	C2631 /sheet26 1 B	C3921 /sheet39 9 A	L3802 /sheet38 6 C	R1511 /sheet15 5 F	R3901 /sheet39 2 C	V2100 /sheet21 6 C											
	C1009 /sheet10 14 E	C1342 /sheet13 7 C	C2632 /sheet26 2 B	C3922 /sheet39 8 B	L3803 /sheet38 6 B	R1512 /sheet15 6 A	R3902 /sheet39 2 C	V2302 /sheet27 8 B											
	C1011 /sheet10 10 B	C1343 /sheet13 7 C	C2633 /sheet26 4 B	C3923 /sheet39 8 B	L3804 /sheet38 6 B	R1513 /sheet15 2 F	R3903 /sheet39 5 B	V2303 /sheet27 6 D											
	C1012 /sheet10 14 B	C1344 /sheet13 8 B	C2634 /sheet26 3 B	C3924 /sheet39 11 C	L3901 /sheet39 5 C	R1515 /sheet15 4 F	R3904 /sheet39 5 C	V2631 /sheet26 3 B											
B	C1013 /sheet10 14 F	C1345 /sheet13 10 D	C2635 /sheet26 4 B	C3925 /sheet39 10 B	L3902 /sheet39 5 C	R1524 /sheet15 10 B	R3905 /sheet39 5 C	V2701-1 /sheet27 3 D											
	C1014 /sheet10 14 F	C1346 /sheet13 7 E	C2636 /sheet26 2 B	C3926 /sheet39 11 B	L3919 /sheet39 3 D	R1525 /sheet15 10 B	R3906 /sheet39 5 C	V2701-2 /sheet27 3 D											
	C1015 /sheet10 14 C	C1347 /sheet13 7 E	C2637 /sheet26 5 B	C3927 /sheet39 9 B	L3921 /sheet39 9 D	R1601 /sheet16 4 B	R3907 /sheet39 5 D	V3961 /sheet39 13 B											
	C1016 /sheet10 14 C	C1348 /sheet13 7 E	C2701 /sheet27 2 B	C3928 /sheet39 8 B	L3922 /sheet39 9 D	R1614 /sheet16 8 C	R3908 /sheet39 5 D	V3962 /sheet39 12 A											
	C1037 /sheet10 2 C	C1350 /sheet13 7 F	C2702 /sheet27 2 B	C3929 /sheet39 8 B	L3923 /sheet39 7 A	R1705 /sheet17 9 A	R3909 /sheet39 6 D	X1001 /sheet10 1 A											
	C1039 /sheet10 11 B	C1352 /sheet13 11 D	C2703 /sheet27 2 B	C3930 /sheet39 10 B	L3924 /sheet39 8 D	R1706 /sheet17 9 B	R3910 /sheet39 6 D	X1400 /sheet14 3 B											
	C1110 /sheet11 9 B	C1353 /sheet13 12 D	C2704 /sheet27 3 B	C3931 /sheet39 7 C	L3981 /sheet39 5 F	R1901 /sheet19 6 C	R3921 /sheet39 7 A	X1504 /sheet15 1 B											
	C1120 /sheet11 5 C	C1354 /sheet13 11 A	C2705 /sheet27 3 B	C3932 /sheet39 11 D	L3982 /sheet39 5 F	R1902 /sheet19 6 C	R3922 /sheet39 11 A	X1603 /sheet16 3 B											
	C1121 /sheet11 6 C	C1355 /sheet13 11 D	C2706 /sheet27 3 B	C3933 /sheet39 7 D	L3986 /sheet39 5 F	R1926 /sheet19 7 C	R3923 /sheet39 10 B	X2200 /sheet22 7 F											
	C1122 /sheet11 6 B	C1356 /sheet13 11 D	C2707 /sheet27 3 B	C3934 /sheet39 8 D	L4201 /sheet42 7 C	R1927 /sheet19 6 C	R3924 /sheet39 10 B	X2203 /sheet22 1 G											
C	C1123 /sheet11 6 B	C1357 /sheet13 12 D	C2708 /sheet27 3 B	C3935 /sheet39 8 E	L4202 /sheet42 7 E	R2200 /sheet22 10 D	R3925 /sheet39 7 D	X2705 /sheet27 4 B											
	C1124 /sheet11 6 B	C1358 /sheet13 12 D	C2709 /sheet27 4 B	C3936 /sheet39 9 E	L4249 /sheet42 10 A	R2201 /sheet22 10 E	R3926 /sheet39 11 C	X3500 /sheet17 3 C											
	C1125 /sheet11 6 B	C1360 /sheet13 11 G	C2710 /sheet27 4 B	C3937 /sheet39 9 E	N1501 /sheet15 3 F	R2202 /sheet22 10 E	R3927 /sheet39 12 D	X3580 /sheet35 15 E											
	C1126 /sheet11 7 B	C1361 /sheet13 12 G	C2711 /sheet27 4 B	C3938 /sheet39 9 E	N3500 /sheet17 3 D	R2310 /sheet27 7 B	R3961 /sheet39 12 A	X3800 /sheet38 5 C											
	C1127 /sheet11 8 B	C1363 /sheet13 12 G	C2712 /sheet27 3 D	C3939 /sheet39 8 B	N3580 /sheet35 12 D	R2311 /sheet27 8 B	R3962 /sheet39 13 B	X3802 /sheet38 7 B											
	C1128 /sheet11 9 C	C1371 /sheet13 4 A	C3302 /sheet1 13 E	C3940 /sheet39 13 D	N3901 /sheet39 4 C	R2312 /sheet27 7 D	R3963 /sheet39 14 B	X3803 /sheet38 8 B											
	C1129 /sheet11 9 B	C1372 /sheet13 4 A	C3304 /sheet1 11 E	C3944 /sheet39 12 E	N3921 /sheet39 8 C	R2313 /sheet27 5 D	R3964 /sheet39 14 B	X3804 /sheet38 9 B											
	C1130 /sheet11 9 B	C1373 /sheet13 4 A	C3305 /sheet1 13 E	C3945 /sheet39 13 E	N3981 /sheet39 3 F	R2631 /sheet26 2 B	R3965 /sheet39 14 B	X3901 /sheet39 9 G											
	C1131 /sheet11 10 C	C1374 /sheet13 4 D	C3307 /sheet1 12 E	C3946 /sheet39 13 E	R101 /page1 3 C	R2633 /sheet26 5 B	R3966 /sheet39 15 B	X4201 /sheet42 1 E											
	C1132 /sheet11 10 D	C1381 /sheet13 3 E	C3308 /sheet1 12 E	C3947 /sheet39 13 E	R1001 /sheet10 2 D	R2700 /sheet27 3 E	R3967 /sheet39 15 B	Z1000 /sheet10 2 E											
D	C1133 /sheet11 10 D	C1382 /sheet13 3 E	C3309 /sheet1 12 E	C3948 /sheet39 12 D	R1003 /sheet10 2 D	R2701 /sheet27 2 D	R3981 /sheet39 2 F	Z1500 /sheet15 4 G											
	C1134 /sheet11 10 D	C1383 /sheet13 1 E	C3314 /sheet1 11 E	C3949 /sheet39 7 D	R1004 /sheet10 2 D	R2702 /sheet27 1 C	R3982 /sheet39 2 F	Z1601 /sheet16 5 B											
	C1135 /sheet11 10 D	C1384 /sheet13 1 E	C3315 /sheet1 11 E	C3960 /sheet39 12 A	R1006 /sheet10 3 E	R2703 /sheet27 1 C	R3983 /sheet39 6 F	Z3961 /sheet39 12 B											
	C1136 /sheet11 10 E	C1390 /sheet13 7 E	C3316 /sheet1 11 E	C3961 /sheet39 13 B	R1014 /sheet10 10 B	R2704 /sheet27 1 C	R3984 /sheet39 8 F	Z4200 /sheet42 8 B											
	C1137 /sheet11 10 E	C1391 /sheet13 6 E	C3325 /sheet1 14 E	C3962 /sheet39 13 B	R1015 /sheet10 9 A	R2705 /sheet27 3 D	R3985 /sheet39 2 B	Z4202 /sheet42 9 C											
	C1139 /sheet11 10 E	C1399 /sheet13 6 E	C3500 /sheet35 2 B	C3963 /sheet39 13 B	R1018 /sheet10 13 B	R2706 /sheet27 1 C	R3987 /sheet39 6 E												
	C1140 /sheet11 5 C	C1400 /sheet14 5 B	C3501 /sheet35 3 B	C3964 /sheet39 13 B	R1021 /sheet10 14 B	R3300 /sheet1 9 D	R4201 /sheet42 7 B												
	C1141 /sheet11 10 C	C1401 /sheet14 6 B	C3502 /sheet35 3 B	C3965 /sheet39 14 B	R1022 /sheet10 15 F	R3301 /sheet1 9 D	R4202 /sheet42 7 C												
	C1200 /sheet12 7 C	C1402 /sheet14 7 B	C3503 /sheet35 3 B	C3966 /sheet39 14 B	R1023 /sheet10 15 F	R3302 /sheet1 4 E	R4203 /sheet42 8 C												
	C1201 /sheet12 6 E	C1403 /sheet14 6 B	C3504 /sheet35 3 B	C3973 /sheet39 8 E	R1024 /sheet10 14 D	R3308 /sheet1 14 D	R4204 /sheet42 2 C												
E	C1203 /sheet12 9 D	C1404 /sheet14 6 A	C3505 /sheet35 4 B	C3981 /sheet39 2 E	R1025 /sheet10 14 D	R3310 /sheet1 4 C	R4249 /sheet42 9 B												
	C1204 /sheet12 10 D	C1405 /sheet14 7 A	C3506 /sheet35 2 C	C3982 /sheet39 2 E	R1026 /sheet10 6 G	R3311 /sheet1 4 D	R4272 /sheet42 7 D												
	C1205 /sheet12 9 D	C1426 /sheet14 4 B	C3507 /sheet35 7 B	C3983 /sheet39 2 E	R1027 /sheet10 6 G	R3312 /sheet1 4 C	S2931 /sheet27 9 D												
	C1206 /sheet12 10 D	C1501 /sheet15 7 B	C3508 /sheet35 4 D	C3984 /sheet39 4 F	R1038 /sheet10 10 A	R3314 /sheet1 4 D	TP4201 /sheet42 9 B												
	C1208 /sheet12 9 E	C1502 /sheet15 8 B	C3509 /sheet35 8 G	C3985 /sheet39 5 E	R1039 /sheet10 10 B	R3315 /sheet1 4 D	TP4202 /sheet42 7 C												
	C1209 /sheet12 10 E	C1504 /sheet15 3 A	C3510 /sheet35 8 G	C3988 /sheet39 5 E	R1040 /sheet10 2 F	R3316 /sheet1 4 D	TP2701 /sheet27 4 C												
	C1210 /sheet12 10 E	C1506 /sheet15 9 B	C3511 /sheet17 2 E	C3989 /sheet39 5 E	R1041 /sheet10 2 F	R3318 /sheet1 9 D	TP1308 /sheet13 8 B												
	C1211 /sheet12 10 E	C1507 /sheet15 5 A	C3512 /sheet17 5 B	C3990 /sheet39 2 F	R1042 /sheet10 3 F	R3319 /sheet1 10 D	TP1312 /sheet13 8 B												
	C1212 /sheet12 11 E	C1510 /sheet15 6 B	C3513 /sheet17 6 B	C3991 /sheet39 3 F	R1043 /sheet10 2 F	R3320 /sheet1 10 D	TP1306 /sheet13 8 B												
	C1213 /sheet12 11 F	C1511 /sheet15 7 B	C3519 /sheet35 2 B	C3992 /sheet39 5 F	R1045 /sheet10 2 G	R3321 /sheet1 10 D	TP1309 /sheet13 8 B												
F	C1214 /sheet12 11 F	C1512 /sheet15 7 B	C3520 /sheet35 8 B	C3993 /sheet39 6 F	R1046 /sheet10 2 G	R3500 /sheet35 4 C	TP1310 /sheet13 8 B												
	C1215 /sheet12 7 C	C1513 /sheet15 9 B	C3521 /sheet17 3 B	C3994 /sheet39 5 G	R1047 /sheet10 2 G	R3501 /sheet35 7 A	TP1311 /sheet13 8 B												
	C1216 /sheet12 6 C	C1514 /sheet15 9 B	C3522 /sheet17 3 E	C3995 /sheet39 6 G	R1048 /sheet10 3 G	R3503 /sheet35 2 A	TP1355 /sheet13 11 D												
	C1301 /sheet13 3 A	C1523 /sheet15 5 A	C3524 /sheet17 6 B	C3996 /sheet39 5 F	R1049 /sheet10 3 F	R3505 /sheet35 2 B	TP1321 /sheet13 6 C												
	C1302 /sheet13 4 A	C1525 /sheet15 6 B	C3525 /sheet17 3 B	C3997 /sheet39 6 E	R1050 /sheet10 3 F	R3508 /sheet35 4 D	TP1302 /sheet13 4 D												
	C1303 /sheet13 4 A	C1526 /sheet15 5 B	C3526 /sheet17 3 B	C4201 /sheet42 5 A	R1051 /sheet10 3 G	R3509 /sheet35 7 G	TP4203 /sheet13 8 C												
	C1304 /sheet13 2 B	C1527 /sheet15 2 F	C3527 /sheet17 5 B	C4202 /sheet42 3 A	R1052 /sheet10 3 G	R3511 /sheet35 8 E	TP1317 /sheet13 8 B												
	C1305 /sheet13 2 B	C1528 /sheet15 4 F	C3528 /sheet17 6 B	C4204 /sheet42 6 A	R1054 /sheet10 3 F	R3512 /sheet35 2 A	TP1301 /sheet13 4 C												
	C1306 /sheet13 3 B	C1541 /sheet15 4 B	C3529 /sheet17 2 C	C4205 /sheet42 4 A	R1055 /sheet10 3 G	R3514 /sheet35 8 E	TP1307 /sheet13 8 B												
	C1307 /sheet13 3 B	C1548 /sheet15 10 B	C3533 /sheet17 5 C	C4206 /sheet42 5 B	R1101 /sheet11 8 B	R3518 /sheet35 8 G	TP1318 /sheet13 6 C												
G	C1308 /sheet13 3 D	C1549 /sheet15 10 B	C3534 /sheet17 6 C	C4207 /sheet42 6 A	R1130 /sheet11 6 B	R3519 /sheet35 8 G	TP1324 /sheet13 4 C												
	C1309 /sheet13 4 D	C1604 /sheet16 8 D	C3535 /sheet17 6 C	C4208 /sheet42 4 B	R1201 /sheet12 9 B	R3540 /sheet17 5 B	TP1334 /sheet13 7 C												
	C1310 /sheet13 4 D	C1605 /sheet16 8 D	C3536 /sheet17 5 C	C4209 /sheet42 9 C	R1202 /sheet12 11 A	R3541 /sheet17 5 B	TP1327 /sheet13 11 A												
	C1311 /sheet13 4 D	C1606 /sheet16 4 B	C3537 /sheet17 6 C	C4211 /sheet42 7 C	R1203 /sheet12 7 C	R3542 /sheet17 2 C	TP3980 /sheet39 2 F												
	C1312 /sheet13 4 D	C1607 /sheet16 5 B	C3538 /sheet17 5 E	C4212 /sheet42 7 A	R1205 /sheet12 9 C	R3543 /sheet17 5 C	TP3921 /sheet39 7 D												
	C1313 /sheet13 4 D	C1608 /sheet16 4 C	C3539 /sheet17 3 E	C4213 /sheet42 6 B	R1300 /sheet13 2 B	R3544 /sheet17 5 C	TP3920 /sheet39 13 C												
	C1314 /sheet13 4 D	C1705 /sheet17 7 A	C3540 /sheet17 3 E	C4214 /sheet42 6 B	R1301 /sheet13 2 F	R3545 /sheet17 5 C	TP1014 /sheet10 14 B												
	C1315 /sheet13 3 D	C1708 /sheet17 8 A	C3577 /sheet35 11 D	C4215 /sheet42 7 D	R1302 /sheet13 3 B	R3547 /sheet17 5 C	TP1013 /sheet10 13 A												
	C1316 /sheet13 7 C	C1709 /sheet17 8 B	C3578 /sheet35 2 E	C4216 /sheet42 6 A	R1303 /sheet13 2 C	R3549 /sheet17 5 C	TP1022 /sheet10 9 B												
	C1317 /sheet13 3 E	C1901 /sheet19 5 B	C3580 /sheet35 13 D	C4217 /sheet42 4 A	R1304 /sheet13 2 G	R3550 /sheet17 5 C	TP1201 /sheet12 7 C												
H	C1319 /sheet13 3 E	C1902 /sheet19 5 C	C3581 /sheet35 14 D	C4218 /sheet42 7 D	R1305 /sheet13 10 D	R3554 /sheet35 3 A	TP1200 /sheet12 8 C												
	C1320 /sheet13 2 E	C1904 /sheet19 5 C	C3583 /sheet35 12 G	C4220 /sheet42 5 A	R1308 /sheet13 3 D	R3580 /sheet35 12 E	TP3502 /sheet17 5 D												
	C1321 /sheet13 3 E	C2100 /sheet21 7 C	C3585 /sheet35 12 F	C4221 /sheet42 7 E	R1320 /sheet13 8 C	R3581 /sheet35 12 E	TP3500 /sheet17 3 D												
	C1322 /sheet13 3 E	C																	

AAC SOUND CHIP

3300-3400



SACC-S_B00B10B



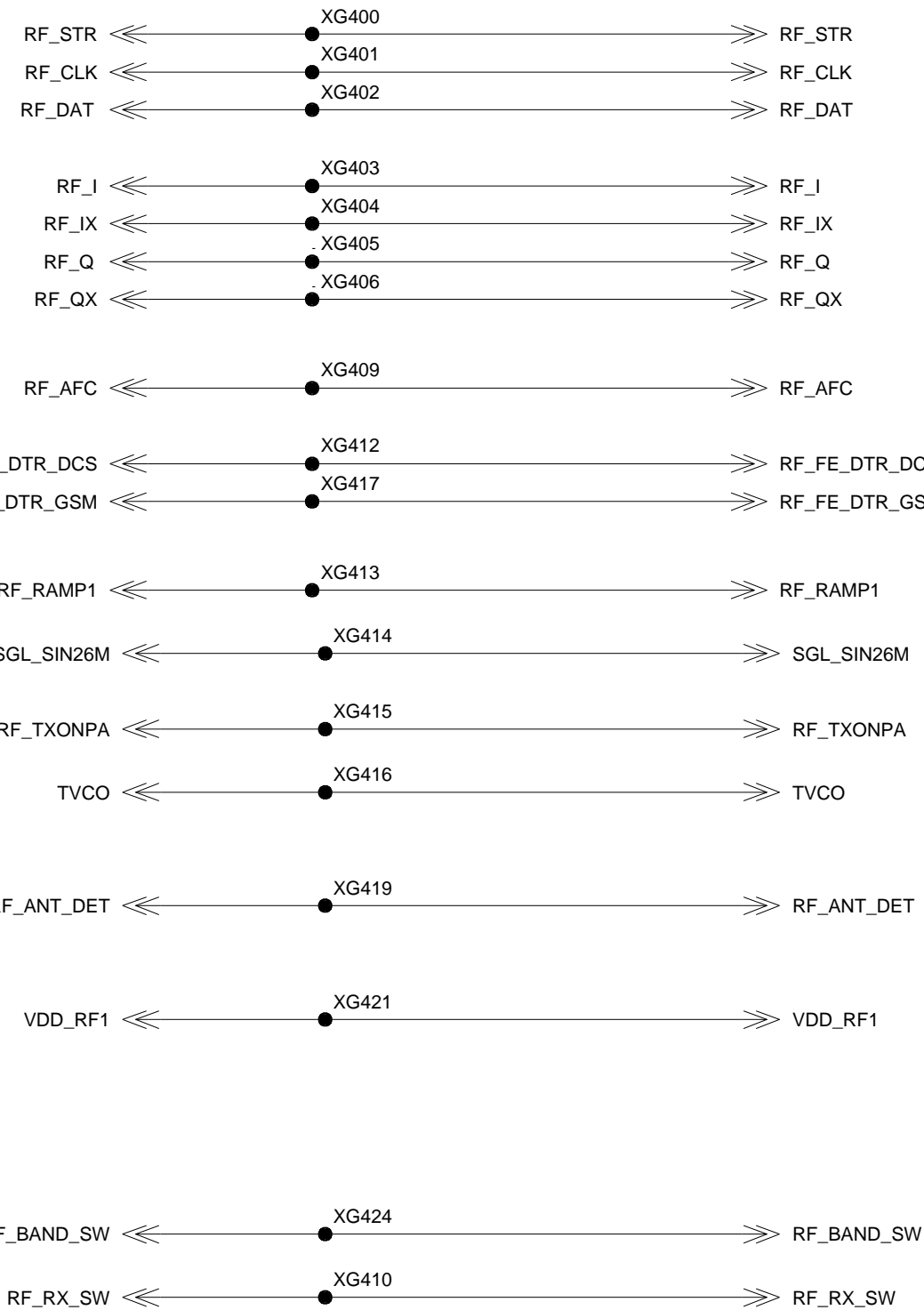
D3300

				DATE	05.07.2004	Sirius B1+ Board Variant V2 TOP HIERARCHY LEVEL SCHEMATIC	1:1
				USER	Kuehn		
				APPR'D			
				COM MD PD HW4 ULM			
2	25049	08.03.2005	Kue	Siemens AG		131380	sheet1
1	22142	12.01.2005	Me				
VERS.	CHANGE NUMBER	DATE	NAME	(Created by BOM number: A5B00900172408-25049)			

HIT_POINTS LOGIK/HF_PART_1

HIT_POINTS LOGIK/HF

400-449



TRANCEIVER ENABLE SIGNAL
TRANCEIVER CLOCK SIGNAL
TRANCEIVER DATA SIGNAL

Bidirectional analoue RX/TX modulartet signal
Baseband signals

Reference frequency correction
DCSTX enable Asic for Hitachisolution
GSMTX enable Asic for Hitachisolution

analogue power amplifier ramping signal

26 MHz reference frequency

Power up of power controller

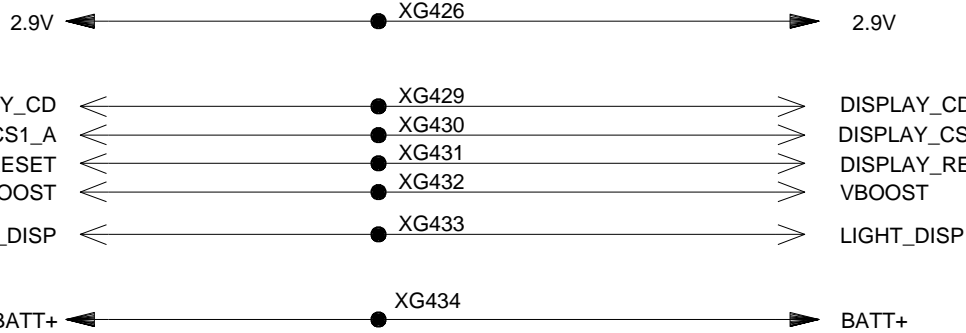
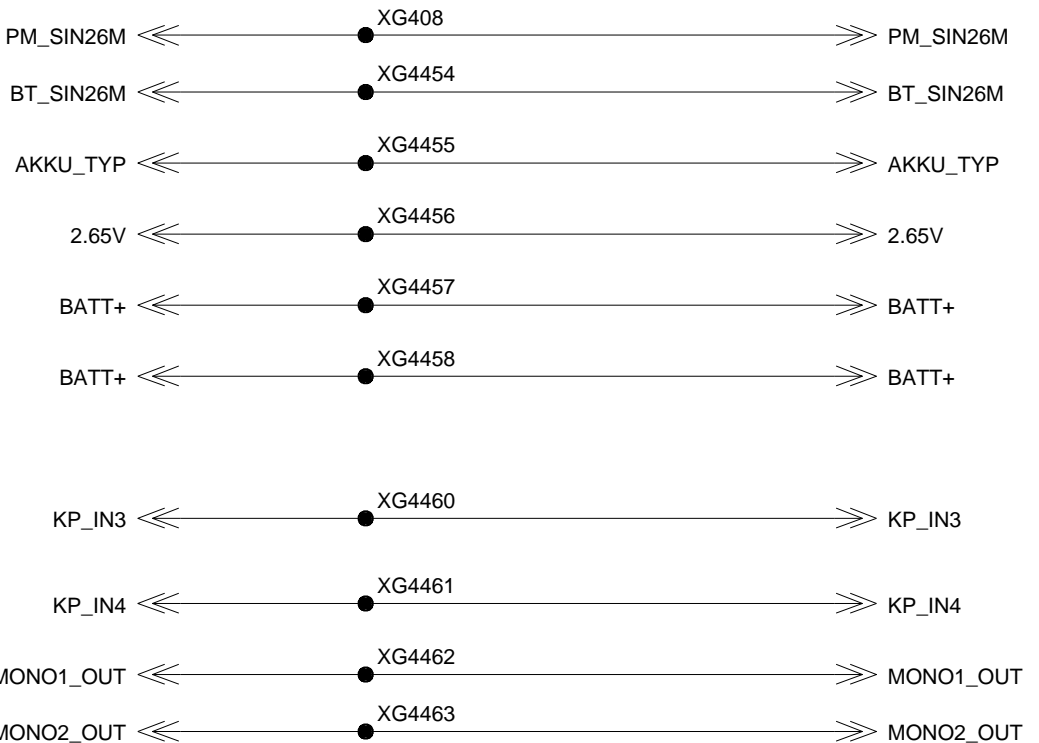
Temperature sensor X-tal

DETECTION internal/external Antenna

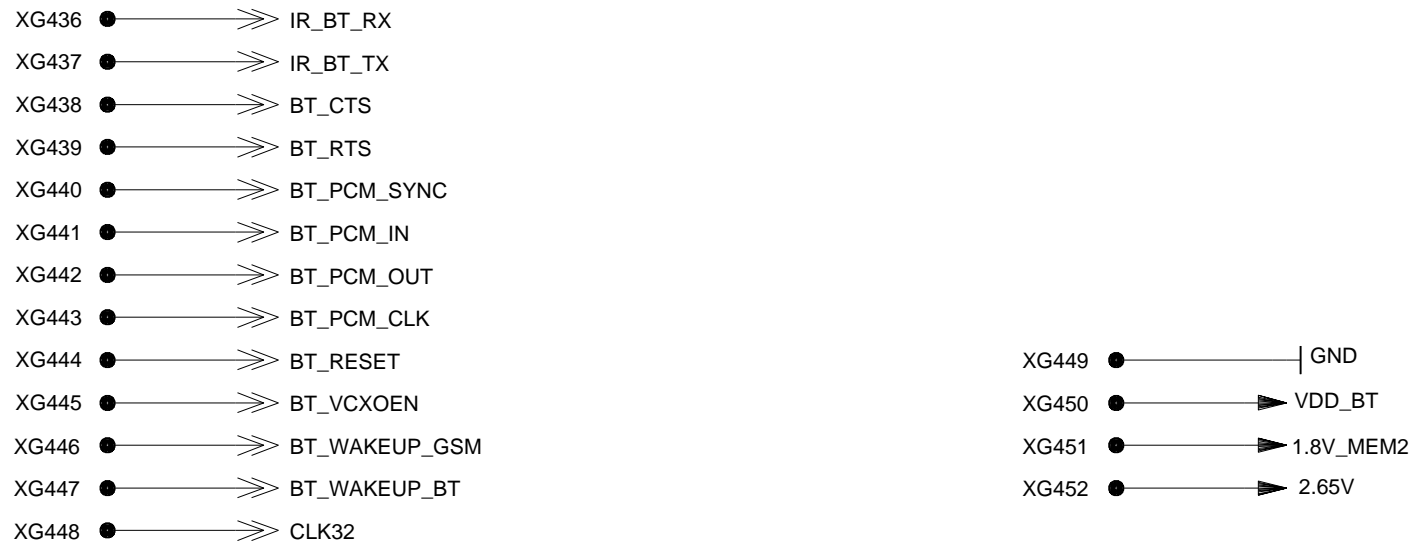
programmed voltage 1

switched LOW- / HIGH-band

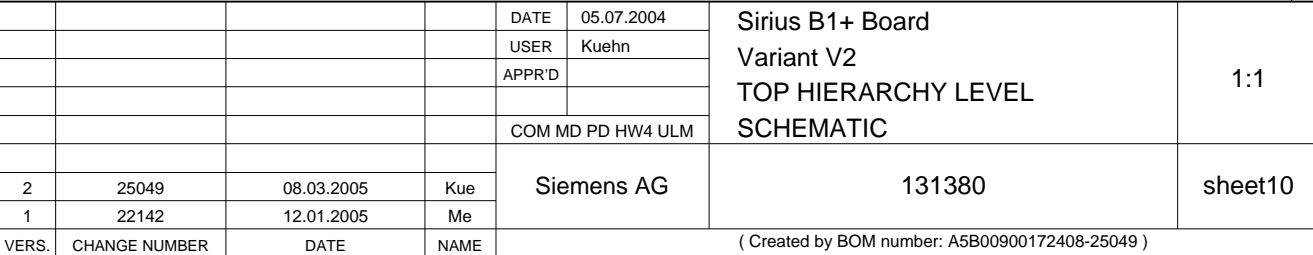
For Layout



HIT_POINTS LOGIK/BLUETOOTH

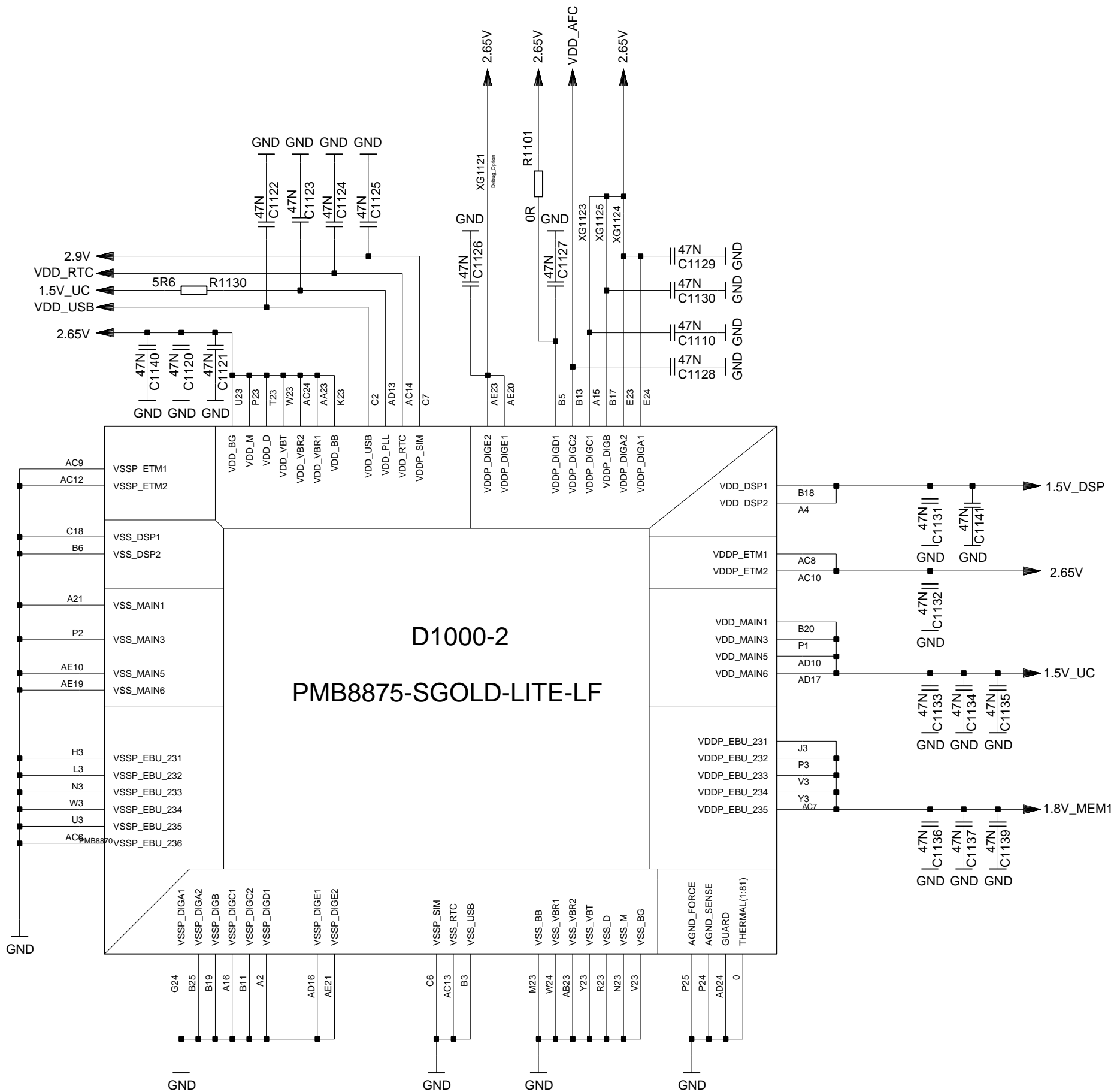


				DATE	05.07.2004	Sirius B1+ Board Variant V2 TOP HIERARCHY LEVEL SCHEMATIC	1:1
				USER	Kuehn		
				APPR'D			
				COM MD PD HW4 ULM			
2	25049	08.03.2005	Kue	Siemens AG		131380	sheet4
1	22142	12.01.2005	Me				
VERS.	CHANGE NUMBER	DATE	NAME	(Created by BOM number: A5B00900172408-25049)			



SGOLDLITE_SUPPLYDOMAIN

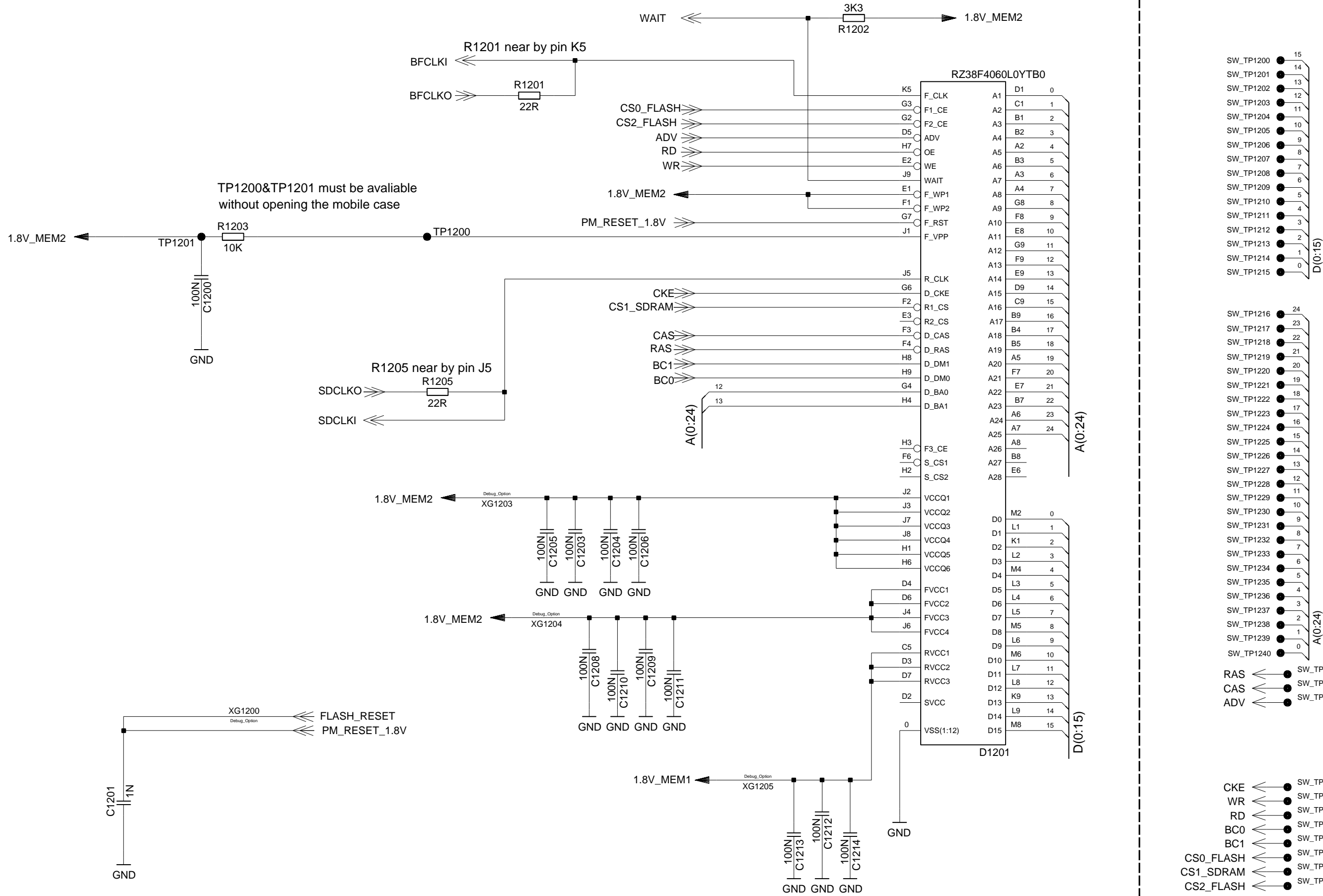
1100-1199



				DATE	05.07.2004	Sirius B1+ Board Variant V2 TOP HIERARCHY LEVEL SCHEMATIC	1:1
				USER	Kuehn		
				APPR'D			
				COM MD PD HW4 ULM			
2	25049	08.03.2005	Kue	Siemens AG		131380	sheet11
1	22142	12.01.2005	Me				
VERS.	CHANGE NUMBER	DATE	NAME	(Created by BOM number: A5B00900172408-25049)			

FLASH_SDRAM

1200-1299



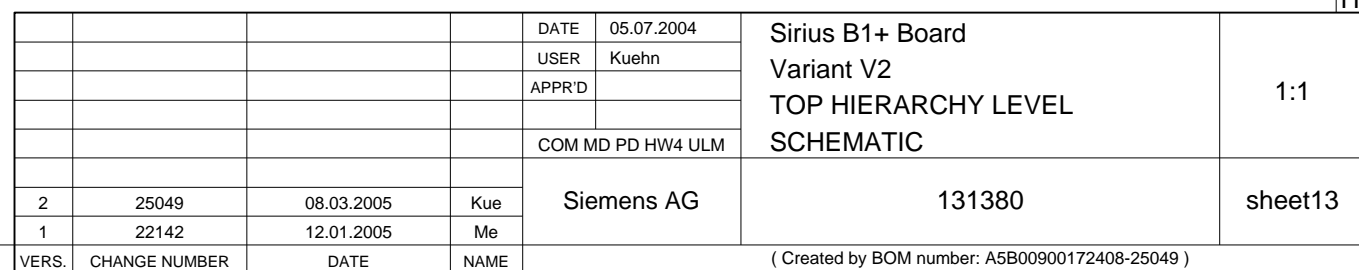
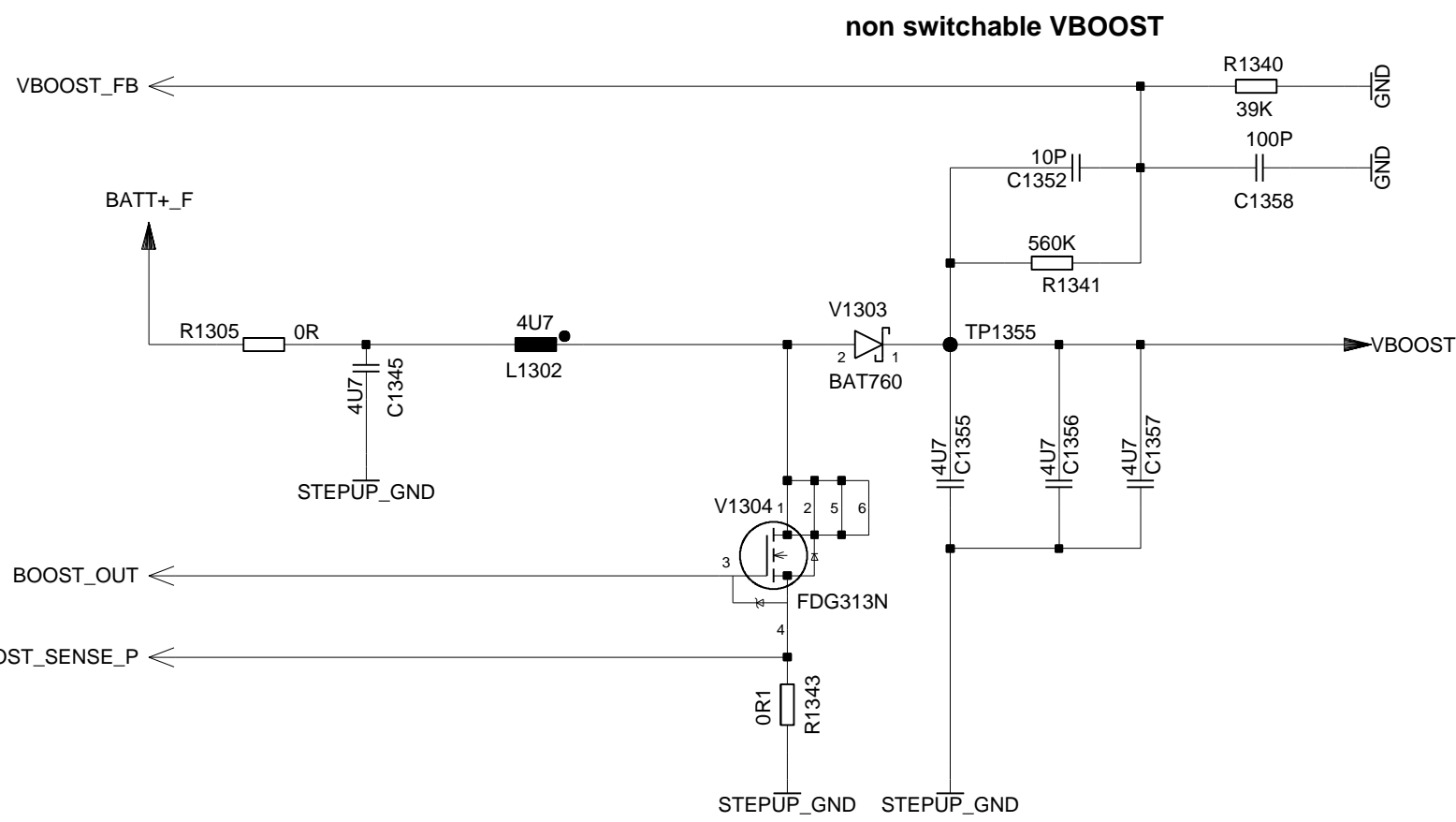
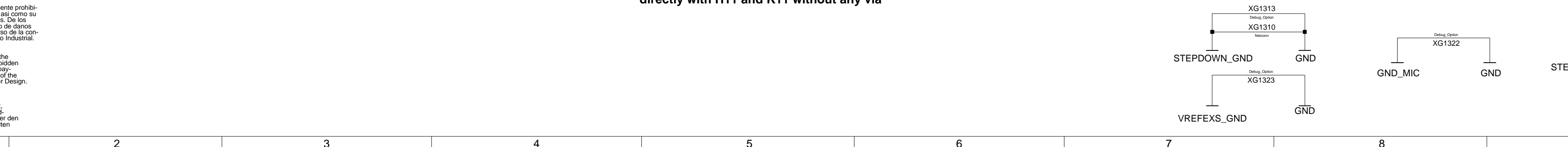
NOTES:

- 1.Place decoupling capacitor to every power ball(VCC,VCCQ) as close as possible, and one capacitor for each ball
2. Connect the power plane as short as possible via the decoupling capacitor to the power ball
3. Connect ground as close as possible to the decoupling capacitor
- 4.Please avoid branches by routing signals to more than one target(ball),
this means for every signal expecting the power connectivity's. this is very important for the clock signals.
5. The BFCLKO&BFCLKI signal is a loop line form SGOLDXXX to the memory and back to SGOLDXXX, so avoid branches here as well. the same applies to SDCLKO & SDCLKI

				DATE	05.07.2004	Sirius B1+ Board Variant V2 TOP HIERARCHY LEVEL SCHEMATIC	1:1
				USER	Kuehn		
				APPR'D			
				COM MD PD HW4 ULM			
2	25049	08.03.2005	Kue	Siemens AG		131380	sheet12
1	22142	12.01.2005	Me				
VERS.		CHANGE NUMBER	DATE	NAME		(Created by BOM number: A5B00900172408-25049)	

Si en nuestra expresa autorización, queda terminantemente prohibida la reproducción total o parcial de este documento, así como su uso indebido y/o su exhibición o comunicación terceros. De los infractores se exigirá el correspondiente resarcimiento de daños y perjuicios. Se reserva todos los derechos para el caso de la concesión de patente de invención o el registro de Modelo Industrial.

Copying of this document, and giving it to others and the use or communication of the contents thereof, are forbidden without express authority. Offenders are liable to the payment of damages. All rights are reserved in the event of the grant of a Patent or the registration of a utility model or Design.

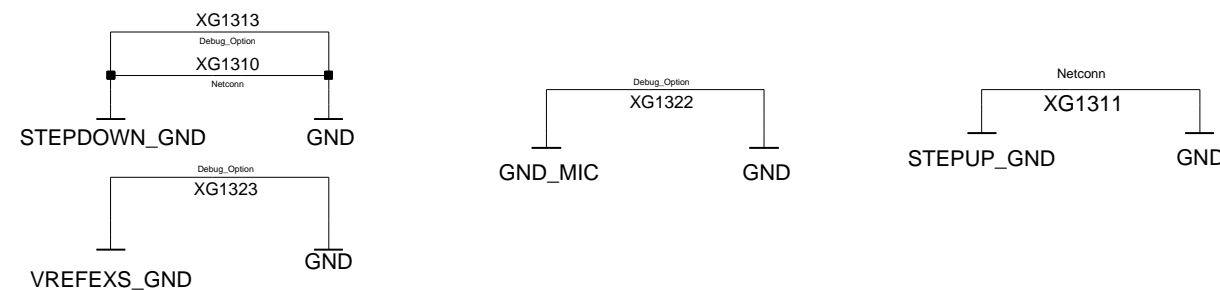


Si en nuestra expresa autorización, queda terminantemente prohibida la reproducción total o parcial de este documento, así como su uso indebido y/o su exhibición o comunicación terceros. De los infractores se exigirá el correspondiente resarcimiento de daños y perjuicios. Se reserva todos los derechos para el caso de la concesión de patente de invención o el registro de Modelo Industrial.

Copying of this document, and giving it to others and the use or communication of the contents thereof, are forbidden without express authority. Offenders are liable to the payment of damages. All rights are reserved in the event of the grant of a Patent or the registration of a utility model or Design.

Weitergabe sowie Vervielfältigung dieser Unterlage, Verwertung und Mitteilung ihres Inhalts nicht gestattet, soweit nicht ausdrücklich zugestanden. Zuwiderhandlungen verpflichten zu Schadenersatz. Alle Rechte für den Fall der Patenterteilung oder GM-Eintragung vorbehalten.

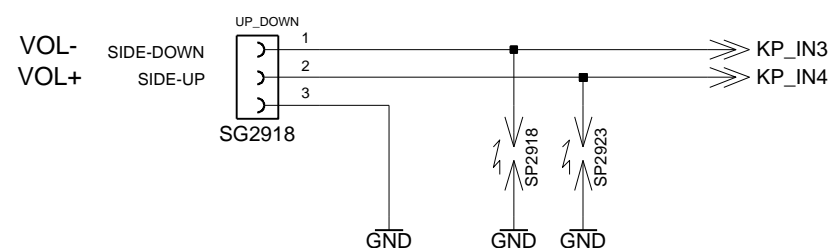
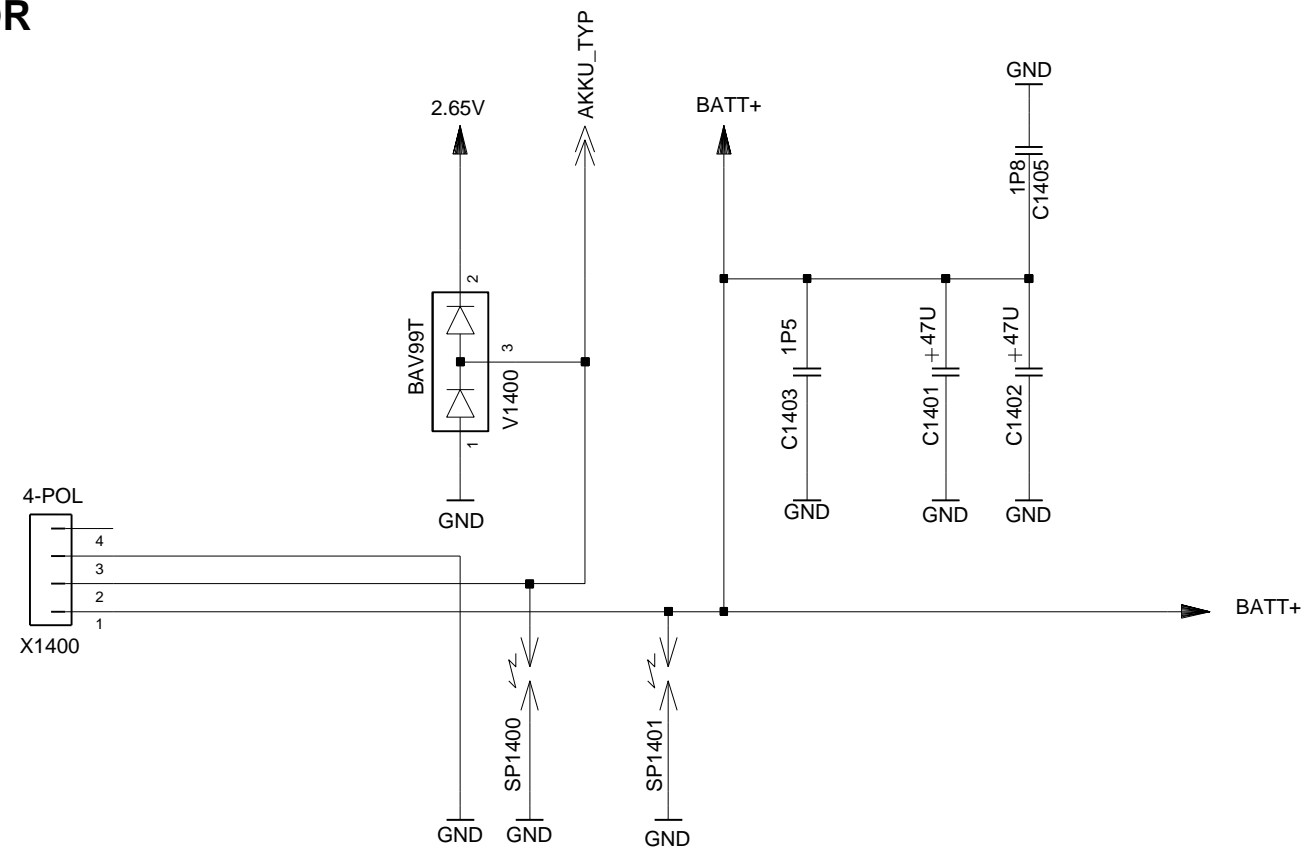
short as possible at the ASIC



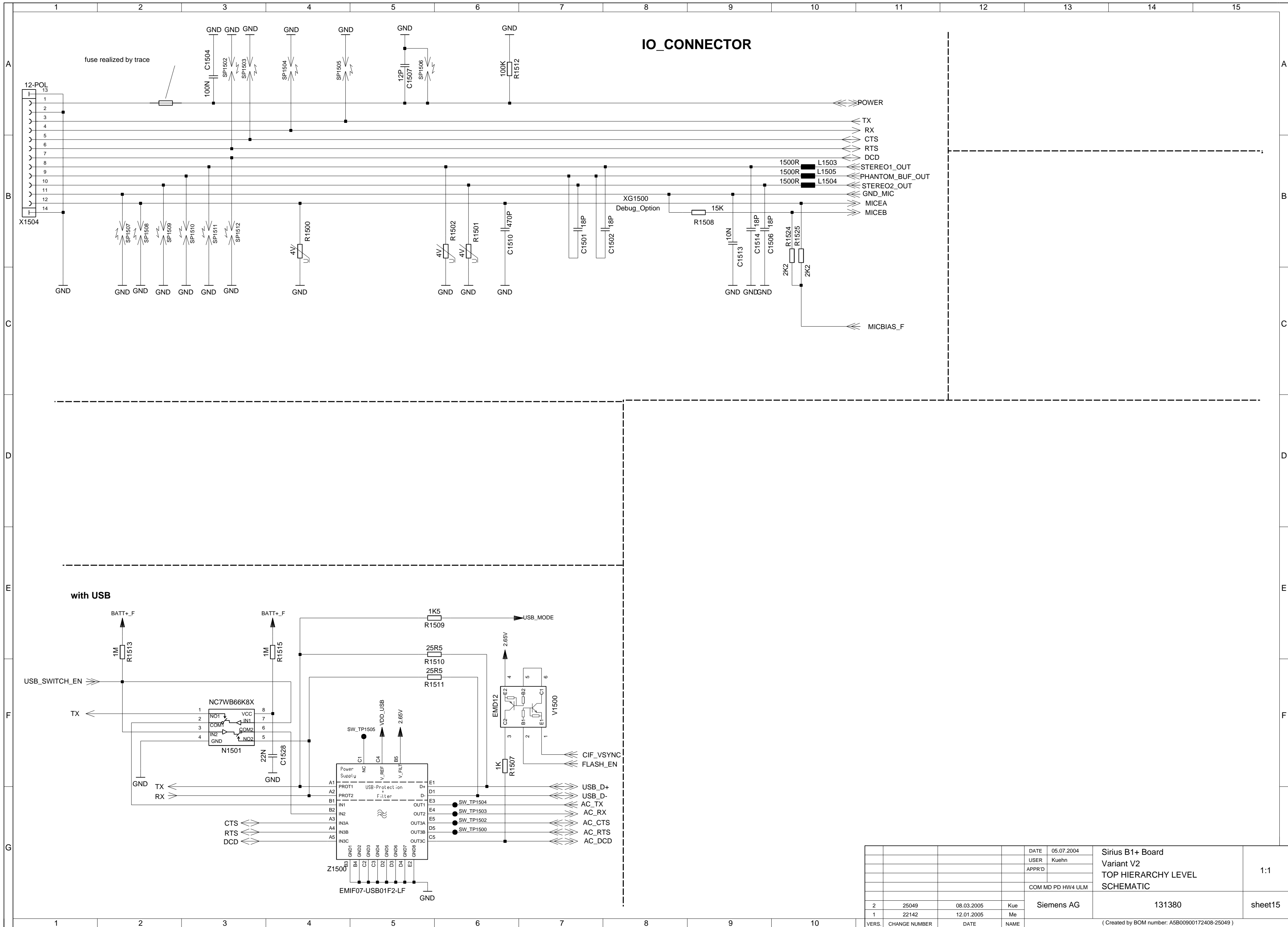
Sirius B1+ Board Variant V2 TOP HIERARCHY LEVEL SCHEMATIC	1:1
131380	sheet

(Created by BOM number: A5B00900172408-25049)

see sheet 27



				DATE	05.07.2004	Sirius B1+ Board Variant V2 TOP HIERARCHY LEVEL SCHEMATIC	1:1	
				USER	Kuehn			
				APPR'D				
				COM MD PD HW4 ULM		Siemens AG	131380	sheet14
2	25049	08.03.2005	Kue					
1	22142	12.01.2005	Me					
VERS.	CHANGE NUMBER	DATE	NAME	(Created by BOM number: A5B00900172408-25049)				



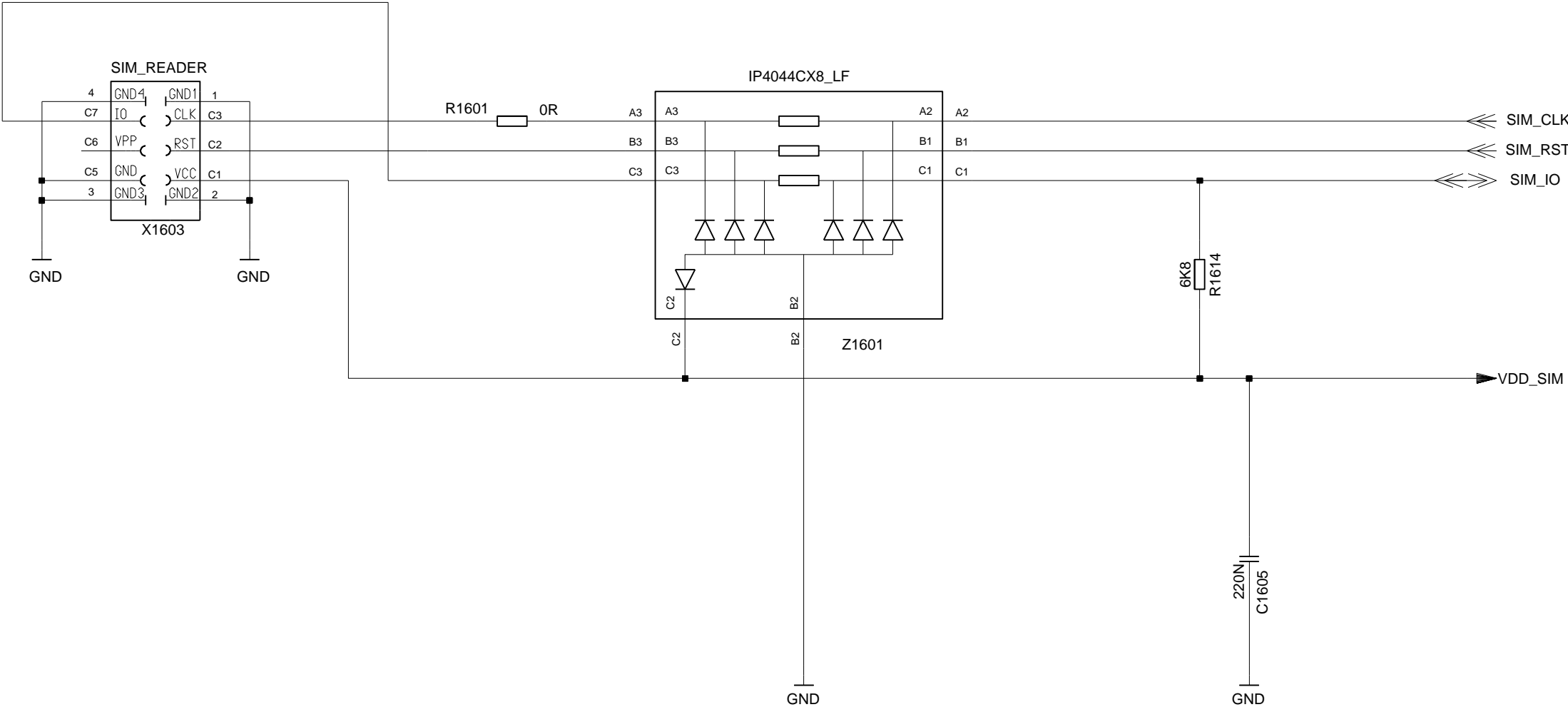
				DATE	05.07.2004	Sirius B1+ Board Variant V2 TOP HIERARCHY LEVEL SCHEMATIC	1:1
				USER	Kuehn		
				APPR'D			
				COM MD PD HW4 ULM			
2	25049	08.03.2005	Kue	Siemens AG		131380	sheet15
1	22142	12.01.2005	Me				
VERS.	CHANGE NUMBER	DATE	NAME	(Created by BOM number: A5B00900172408-25049)			

Proprietary data, company confidential.
All rights reserved

Als Betriebsgeheimnis anvertraut
Alle Rechte vorbehalten

SIM_CONNECTOR

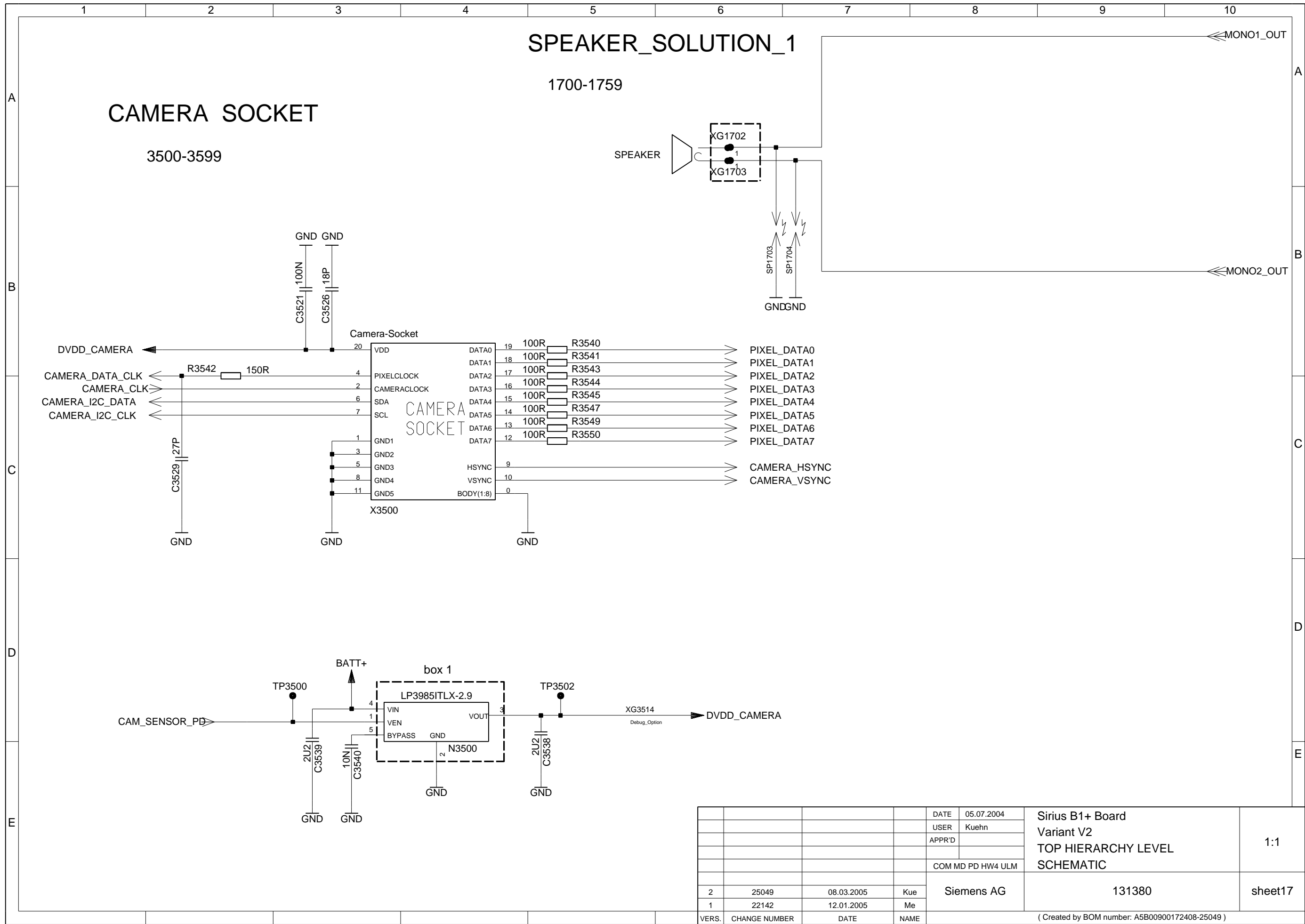
1600-1659



				DATE	05.07.2004	Sirius B1+ Board Variant V2 TOP HIERARCHY LEVEL SCHEMATIC	1:1	
				USER	Kuehn			
				APPR'D				
				COM MD PD HW4 ULM		Siemens AG	131380	sheet16
2	25049	08.03.2005	Kue					
1	22142	12.01.2005	Me					
VERS.	CHANGE NUMBER	DATE	NAME	(Created by BOM number: A5B00900172408-25049)				

Proprietary data, company confidential.
All rights reserved

Als Betriebsgeheimnis anvertraut
Alle Rechte vorbehalten

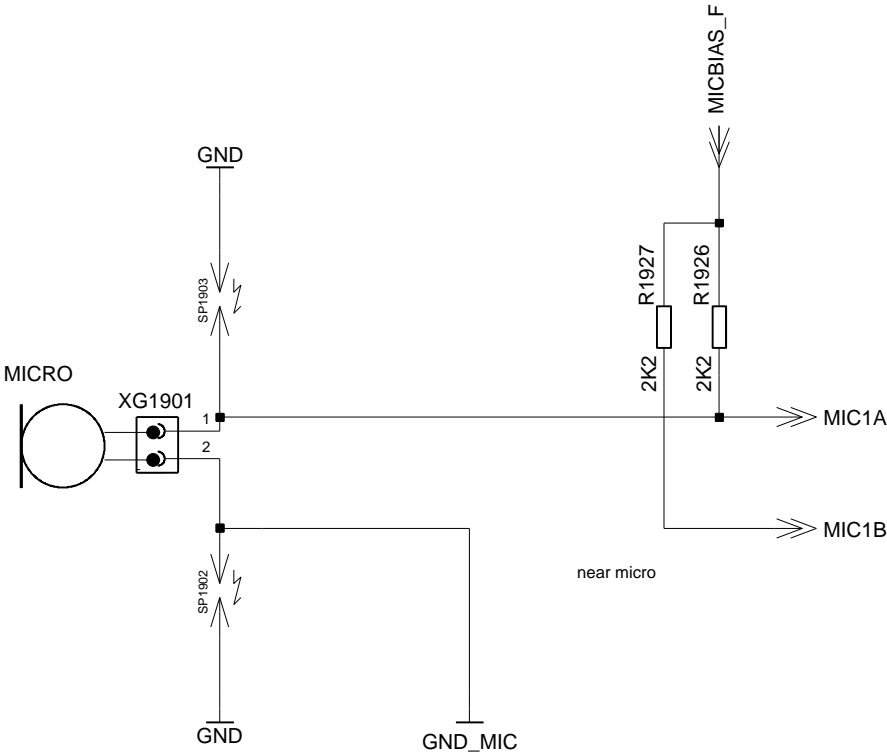


Proprietary data, company confidential.
All rights reserved

Als Betriebsgeheimnis anvertraut
Alle Rechte vorbehalten

MICROPHONE_CIRCUIT_1

1900-1999

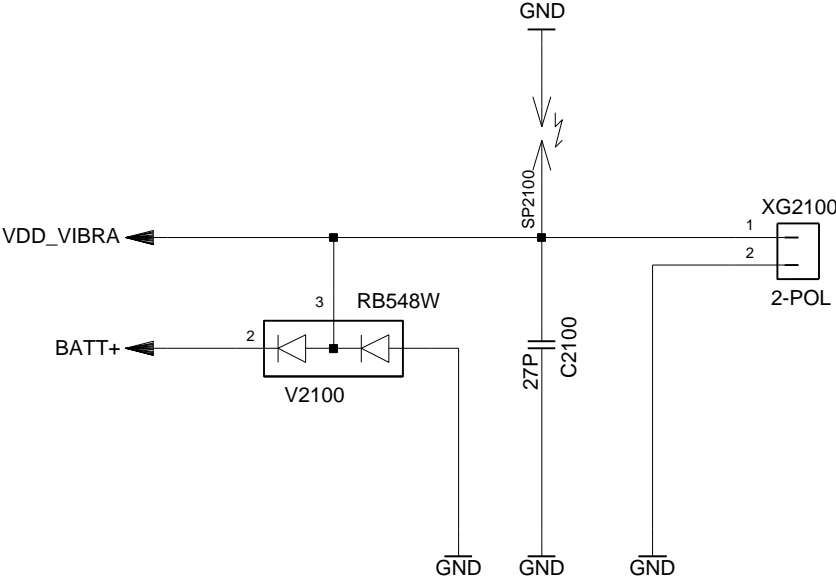


				DATE	05.07.2004	Sirius B1+ Board Variant V2 TOP HIERARCHY LEVEL SCHEMATIC	1:1
				USER	Kuehn		
				APPR'D			
				COM MD PD HW4 ULM			
2	25049	08.03.2005	Kue	Siemens AG		131380	sheet19
1	22142	12.01.2005	Me				
VERS.	CHANGE NUMBER	DATE	NAME	(Created by BOM number: A5B00900172408-25049)			

Proprietary data, company confidential.
All rights reserved

Als Betriebsgeheimnis anvertraut
Alle Rechte vorbehalten

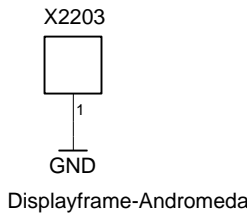
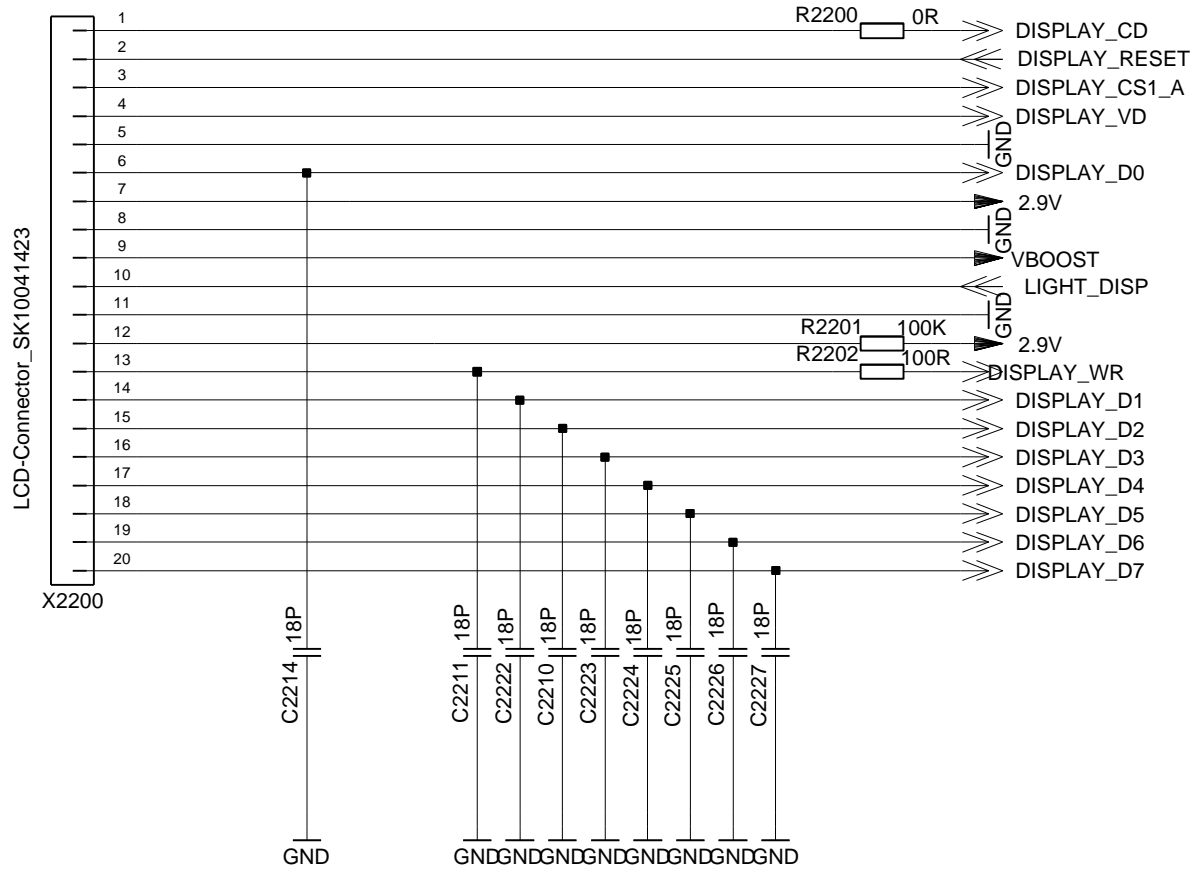
VIBRA
2100-2125



				DATE	05.07.2004	Sirius B1+ Board Variant V2 TOP HIERARCHY LEVEL SCHEMATIC	1:1
				USER	Kuehn		
				APPR'D			
				COM MD PD HW4 ULM		131380	sheet21
2	25049	08.03.2005	Kue	Siemens AG			
1	22142	12.01.2005	Me				
VERS.	CHANGE NUMBER	DATE	NAME	(Created by BOM number: A5B00900172408-25049)			

DISPLAY_CONNECTOR

2200-2299



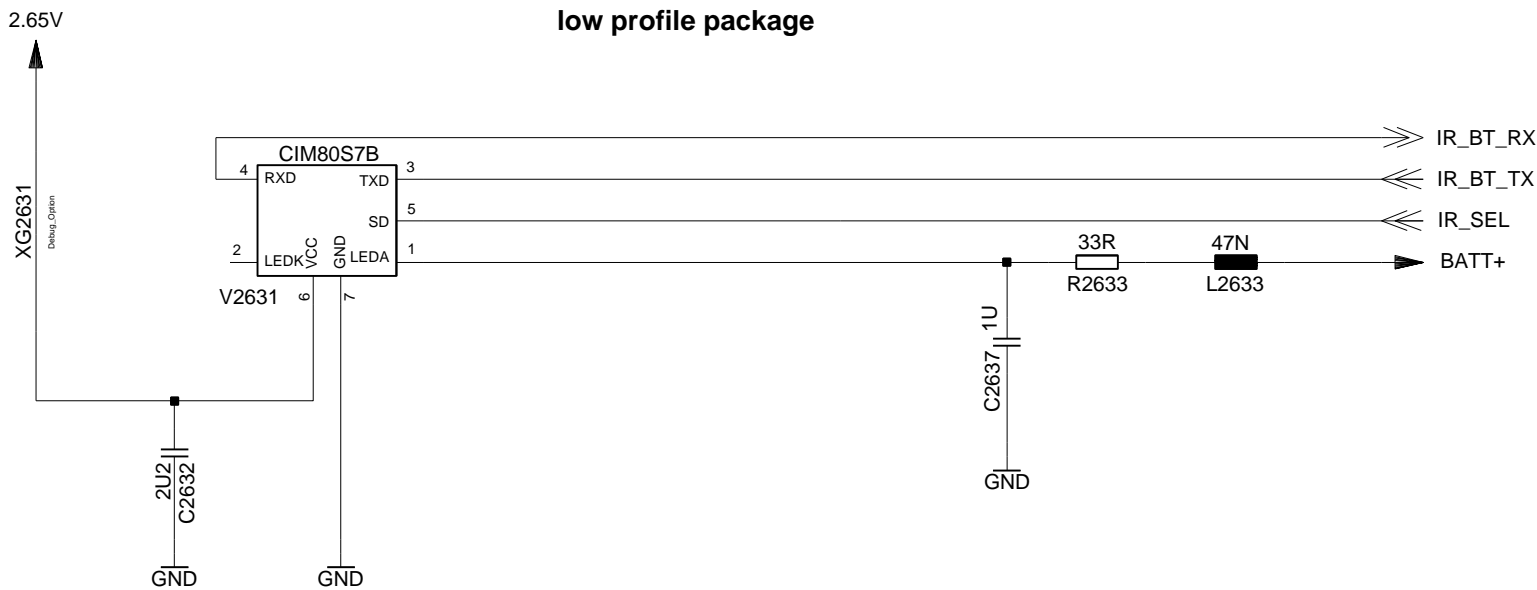
				DATE	05.07.2004	Sirius B1+ Board Variant V2 TOP HIERARCHY LEVEL SCHEMATIC	1:1
				USER	Kuehn		
				APPR'D			
				COM MD PD HW4 ULM			
2	25049	08.03.2005	Kue	Siemens AG		131380	sheet22
1	22142	12.01.2005	Me				
VERS.	CHANGE NUMBER	DATE	NAME	(Created by BOM number: A5B00900172408-25049)			

Proprietary data, company confidential.
All rights reserved

Als Betriebsgeheimnis anvertraut
Alle Rechte vorbehalten

IRDA

2600-2699



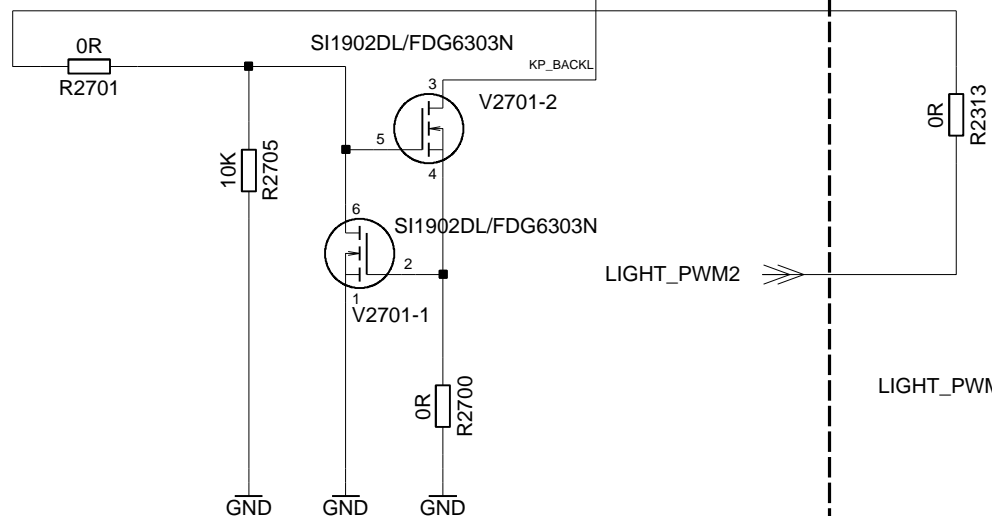
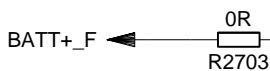
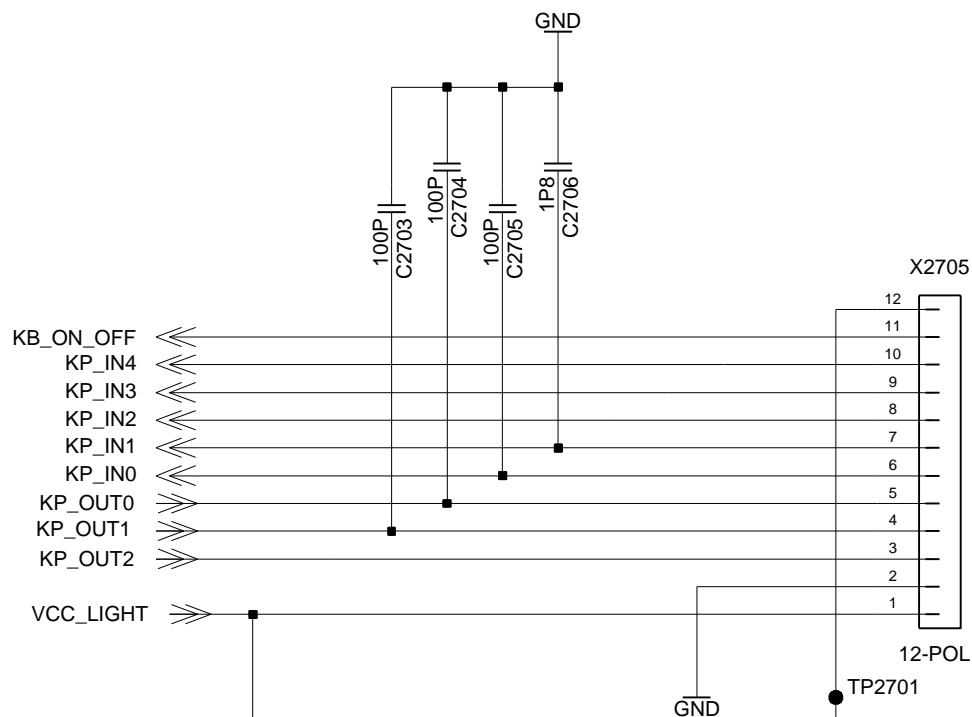
				DATE	05.07.2004	Sirius B1+ Board Variant V2 TOP HIERARCHY LEVEL SCHEMATIC	1:1
				USER	Kuehn		
				APPR'D			
				COM MD PD HW4 ULM		131380	sheet26
2	25049	08.03.2005	Kue	Siemens AG			
1	22142	12.01.2005	Me				
VERS.	CHANGE NUMBER	DATE	NAME	(Created by BOM number: A5B00900172408-25049)			

Proprietary data, company confidential.
All rights reserved

Als Betriebsgeheimnis anvertraut
Alle Rechte vorbehalten

MMI_CONNECTOR

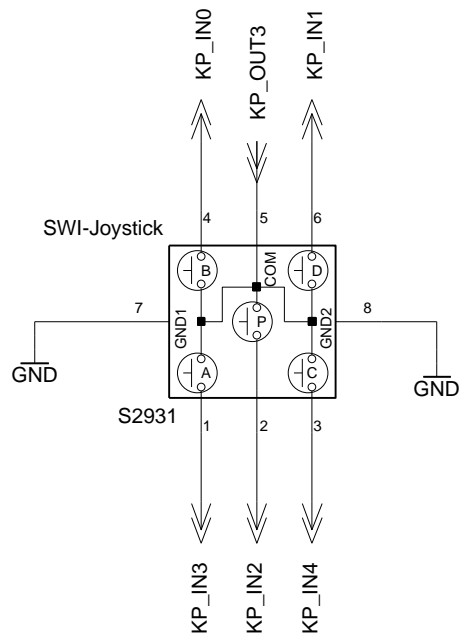
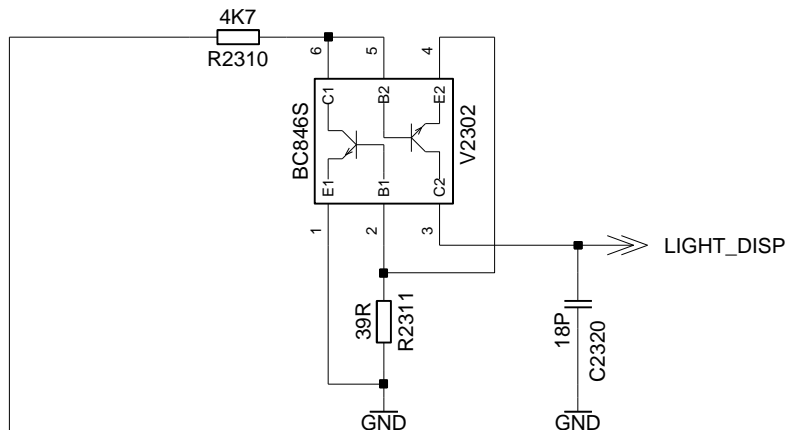
BOARD TO BOARD CONNECTOR



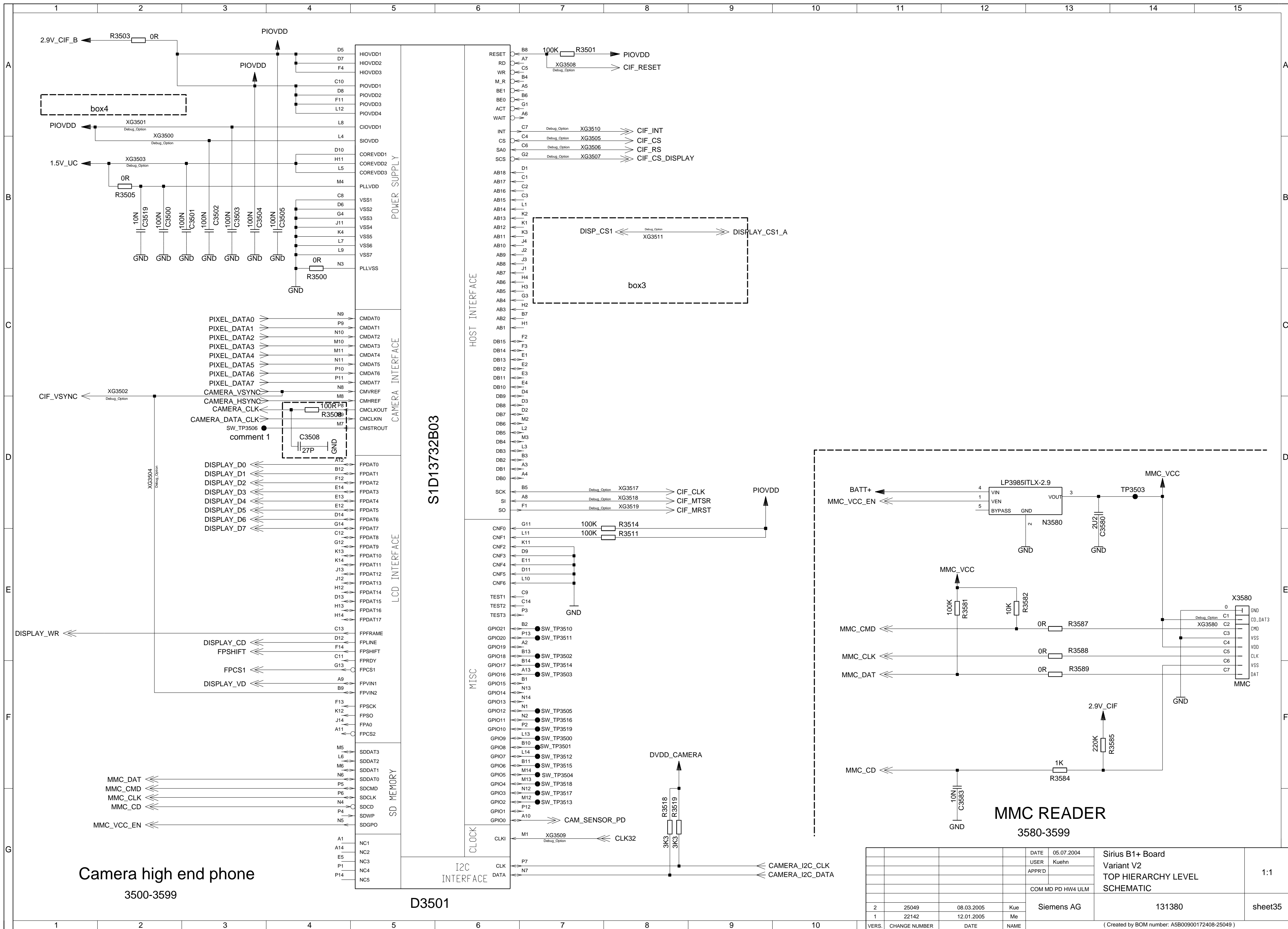
DISPLAY_BACKLIGHT

2300-2399

MAIN_DISPLAY



				DATE	05.07.2004	Sirius B1+ Board Variant V2 TOP HIERARCHY LEVEL SCHEMATIC	1:1
				USER	Kuehn		
				APPR'D			
				COM MD PD HW4 ULM			
2	25049	08.03.2005	Kue	Siemens AG		131380	sheet27
1	22142	12.01.2005	Me				
VERS.	CHANGE NUMBER	DATE	NAME	(Created by BOM number: A5B00900172408-25049)			



Camera high end phone

3500-3599

D3501

MMC READER

3580-3599

Sirius B1+ Board
Variant V2
TOP HIERARCHY LEVEL
SCHEMATIC

1:1

Siemens AG

131380

sheet35

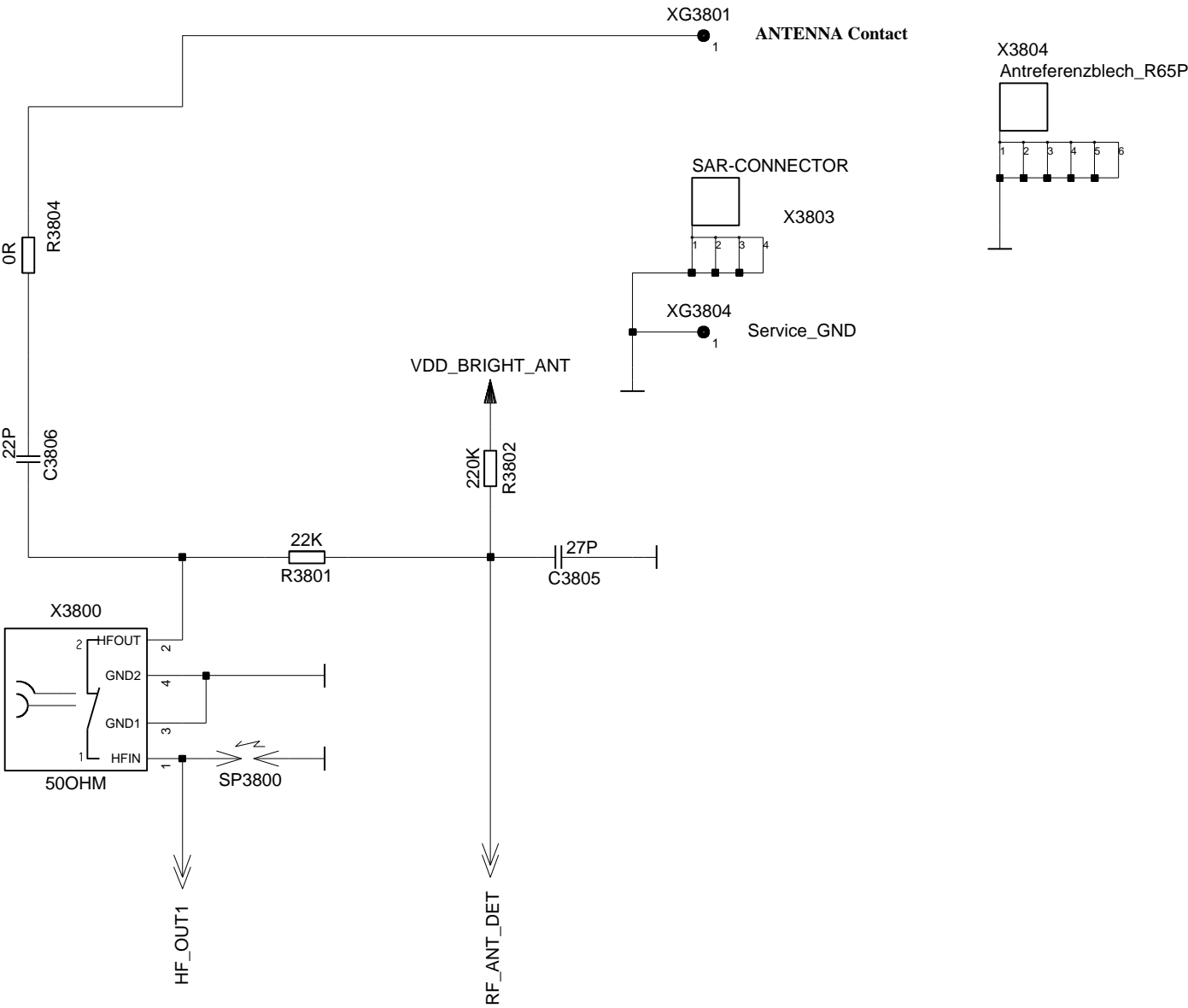
(Created by BOM number: A5B00900172408-25049)

Proprietary data, company confidential.
All rights reserved

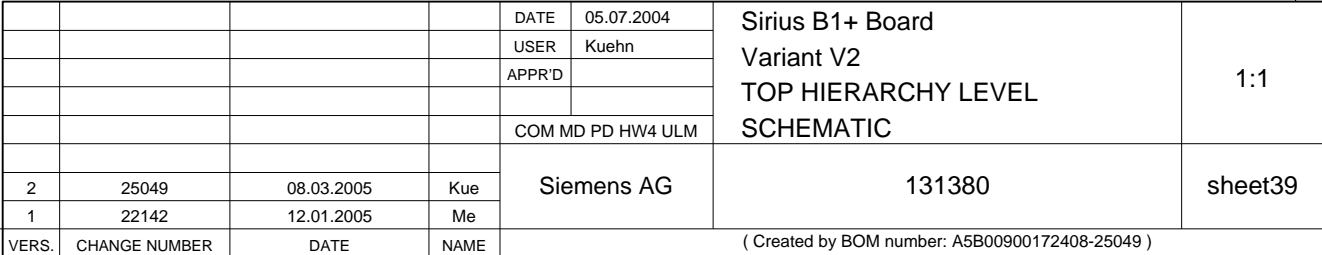
Als Betriebsgeheimnis anvertraut
Alle Rechte vorbehalten

ANTENNA_CIRCUIT

3800-3849



				DATE	05.07.2004	Sirius B1+ Board Variant V2 TOP HIERARCHY LEVEL SCHEMATIC	1:1	
				USER	Kuehn			
				APPR'D				
				COM MD PD HW4 ULM		Siemens AG	131380	sheet38
2	25049	08.03.2005	Kue					
1	22142	12.01.2005	Me					
VERS.	CHANGE NUMBER	DATE	NAME	(Created by BOM number: A5B00900172408-25049)				

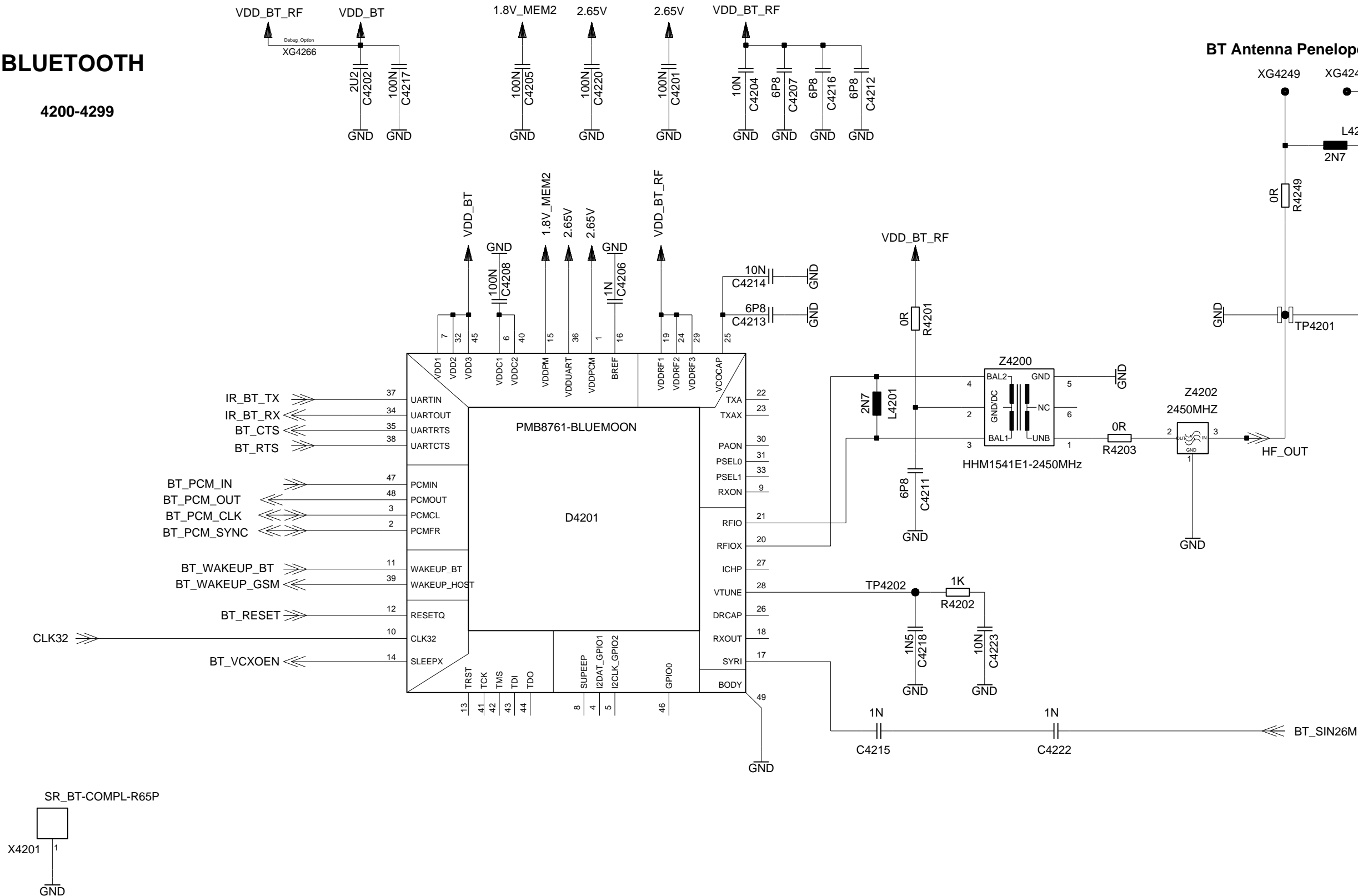


Proprietary data, company confidential.
All rights reserved

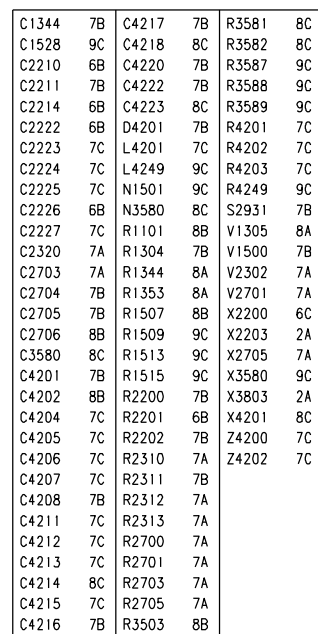
Als Betriebsgeheimnis anvertraut
Alle Rechte vorbehalten

BLUETOOTH

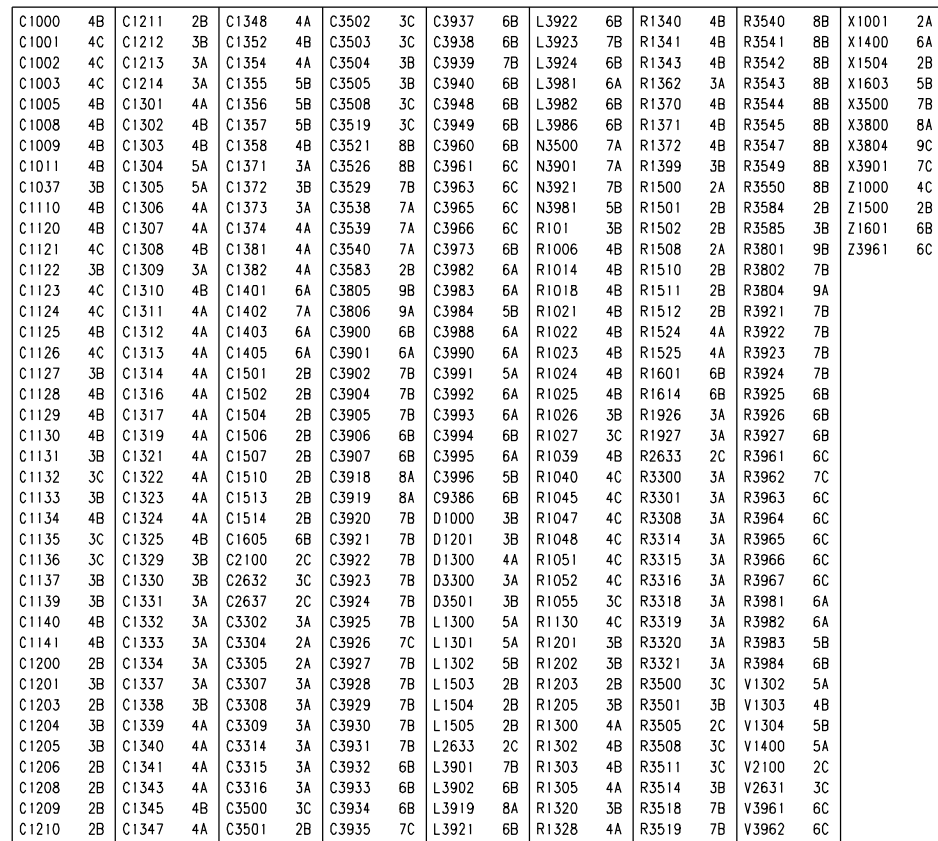
4200-4299



				DATE	05.07.2004	Sirius B1+ Board Variant V2 TOP HIERARCHY LEVEL SCHEMATIC	1:1	
				USER	Kuehn			
				APPR'D				
				COM MD PD HW4 ULM		Siemens AG	131380	sheet42
2	25049	08.03.2005	Kue					
1	22142	12.01.2005	Me					
VERS.	CHANGE NUMBER	DATE	NAME	(Created by BOM number: A5B00900172408-25049)				



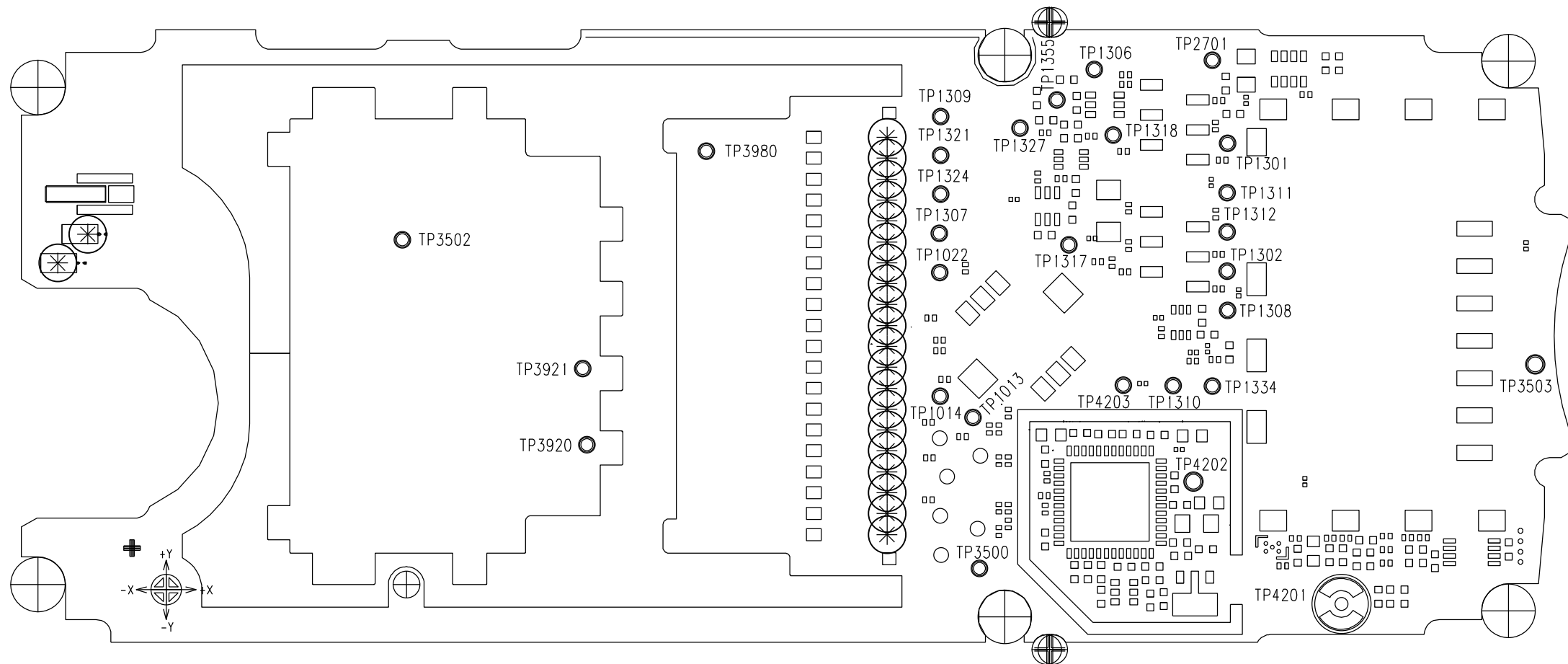
				DATE	05.07.2004	Sirius B1+ Board Variant V2 WIRING DIAGRAMM (SOLDER SIDE 1)	3:1
				NAME	Kuehn		
				APPR'D			
				STD			
				COM MD PD HW4 ULM			
2	25049	08.03.2005	Kue	SIEMENS AG		131381	SHEET
1	22142	12.01.2005	Me				1+
VERS.	CHANGE NUMBER	DATE	NAME	(Created by BOM number: A5B00900172408-25049)			



				DATE	05.07.2004	Sirius B1+ Board Variant V2 WIRING DIAGRAMM (SOLDER SIDE 2)	3:1
				NAME	Kuehn		
				APPR'D			
				STD			
				COM MD PD HW4 ULM			
2	25049	08.03.2005	Kue	SIEMENS AG		131381	SHEET
1	22142	12.01.2005	Me				2+
VERS.	CHANGE NUMBER	DATE	NAME	(Created by BOM number: A5B00900172408-25049)			

PROPRIETARY DATA, COMPANY CONFIDENTIAL
ALL RIGHTS RESERVED

ALS BETRIEBSGEHEIMNIS ANVERTRAUT
ALLE RECHTE VORBEHALTEN

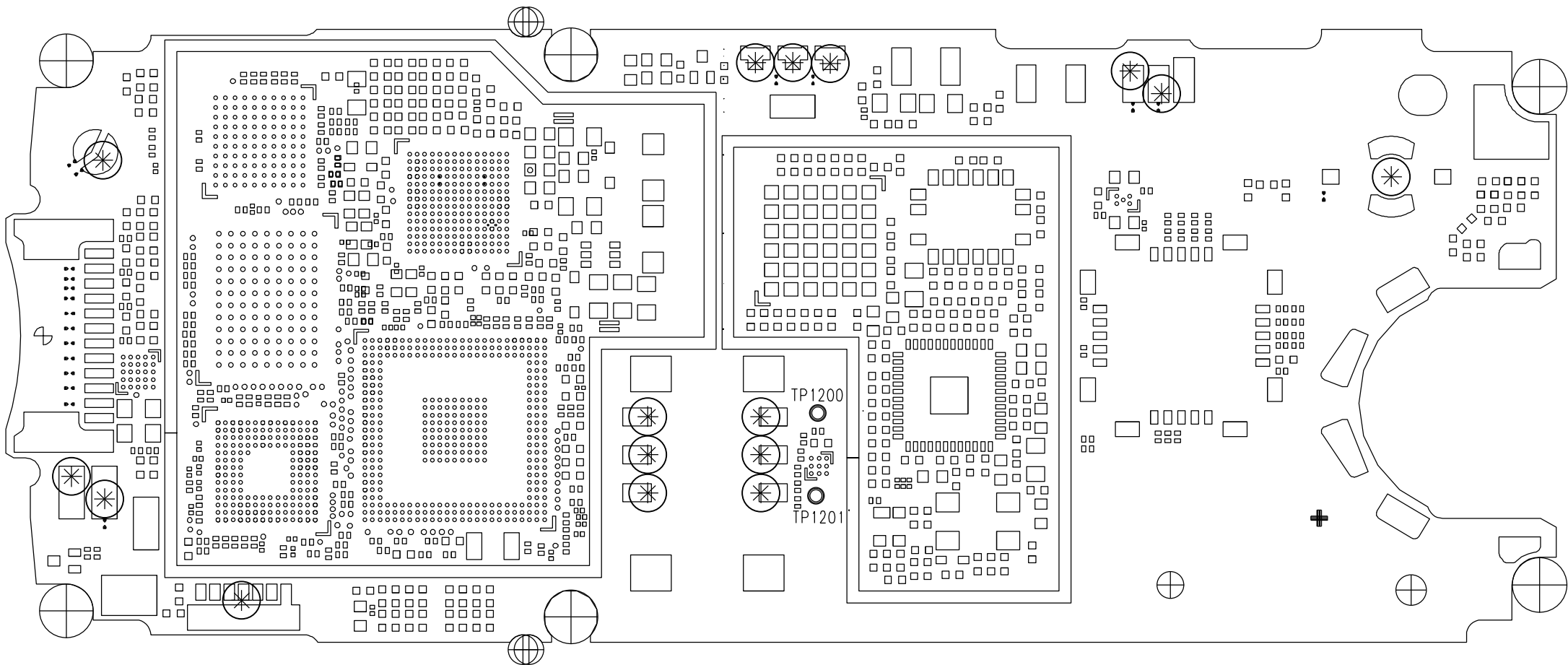


TP1013	6B
TP1014	6B
TP1022	6B
TP1301	8A
TP1302	8B
TP1306	7A
TP1307	6B
TP1308	8B
TP1309	6A
TP1310	7B
TP1311	8A
TP1312	8B
TP1317	7B
TP1318	7A
TP1321	6A
TP1324	6A
TP1327	7A
TP1334	8B
TP1355	7A
TP2701	8A
TP3500	6C
TP3502	3B
TP3503	9B
TP3920	4B
TP3921	4B
TP3980	5A
TP4201	8C
TP4202	8B
TP4203	7B

				DATE	05.07.2004	Sirius B1+ Board Variant V2 TESTPOINT DIAGRAMM (SIDE 1)	3:1
				NAME	Kuehn		
				APPR'D			
				STD			
				COM MD PD HW4 ULM		SIEMENS AG	SHEET 1+
2	25049	08.03.2005	Kue				
1	22142	12.01.2005	Me				
VERS.	CHANGE NUMBER	DATE	NAME	(Created by BOM number: A5B00900172408-25049)			

PROPRIETARY DATA, COMPANY CONFIDENTIAL
ALL RIGHTS RESERVED

ALS BETRIEBSGEHEIMNIS ANVERTRAUT
ALLE RECHTE VORBEHALTEN



TP1200 6B
TP1201 6B

				DATE	05.07.2004	Sirius B1+ Board Variant V2 TESTPOINT DIAGRAMM (SIDE 2)	3:1
				NAME	Kuehn		
				APPR'D			
				STD			
				COM MD PD HW4 ULM		SIEMENS AG	SHEET 2-
2	25049	08.03.2005	Kue				
1	22142	12.01.2005	Me				
VERS.	CHANGE NUMBER	DATE	NAME	(Created by BOM number: A5B00900172408-25049)			

SHEET
2-